

Research Space

Lecture

Richborough the secret port

Watts, M.

RICHBOROUGH PORT CONTROVERSY & DISPOSAL

CENTRE FOR KENT HISTORY &
HERITAGE

WHY RICHBOROUGH?

- LOGISTICS LOG JAM BY 1916
- INCREASE IN MANPOWER & SUPPLIES
- SECRET, SHELTERED & SECURE LOCATION
- ROMAN & MEDIAEVAL
- RIVER STOUR – LOW TIDAL RANGE
- SUITABLE FOR BARGES
- LARGE GRAVEL BEDS - BUILDING
- AMPLE SPACE

CONTEXT

- SPEED & SCALE OF CONSTRUCTION- COST CONTROL?
- NECESSITY FOR REINFORCEMENTS, MUNITIONS & SUPPLIES TO BOLSTER DEFENCE AT AMIENS THEN FINAL ADVANCE – THE 100 DAYS
- REPATRIATION OF WOUNDED
- RETURN OF SCRAP & SALVAGE
- BARGES & RO-RO – THE LATTER FROM MARCH 1918

OPERATION (1)

OPERATION (2)

OPERATION (3)

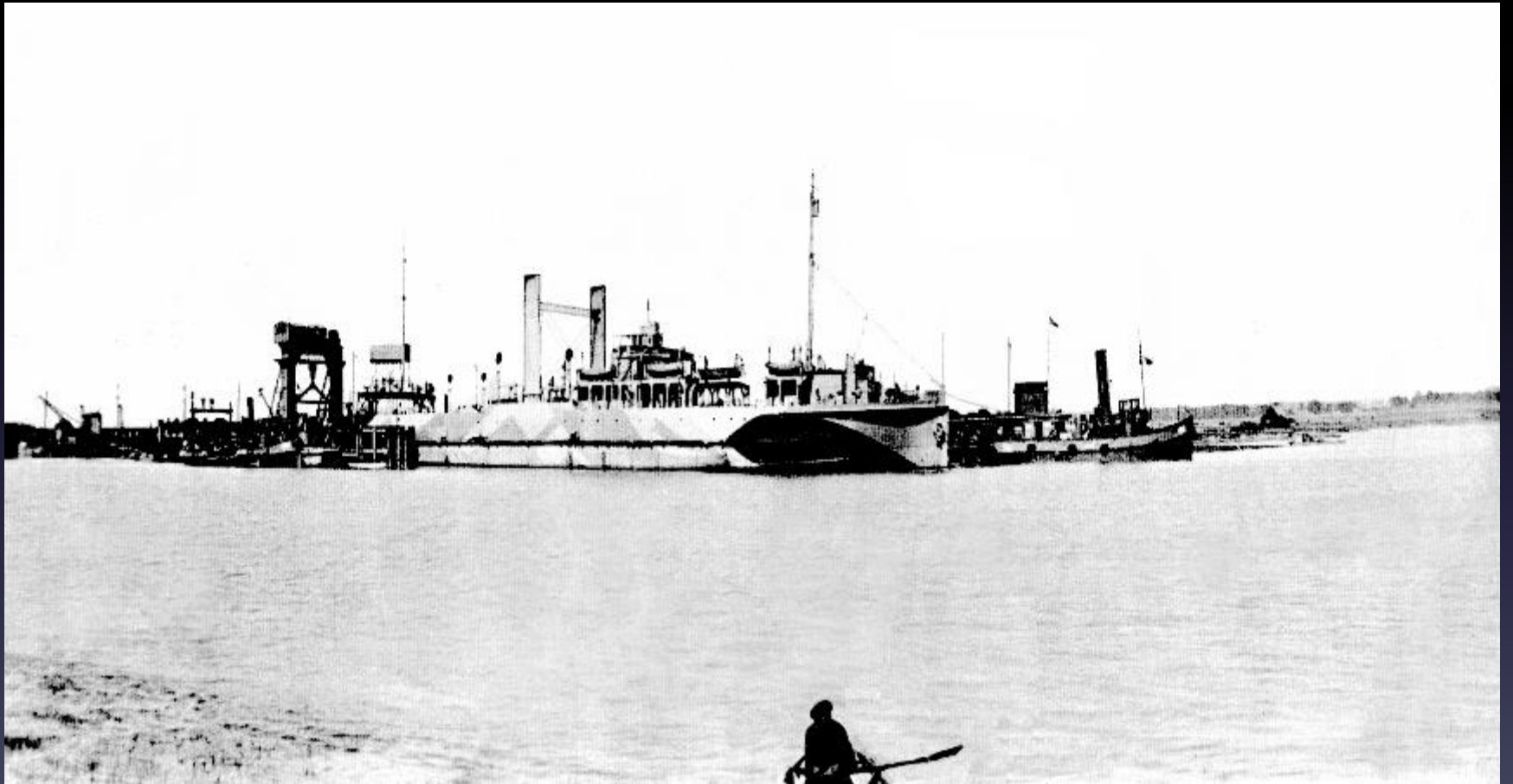
BARGES



BARGES



RO-RO- TRAIN FERRY



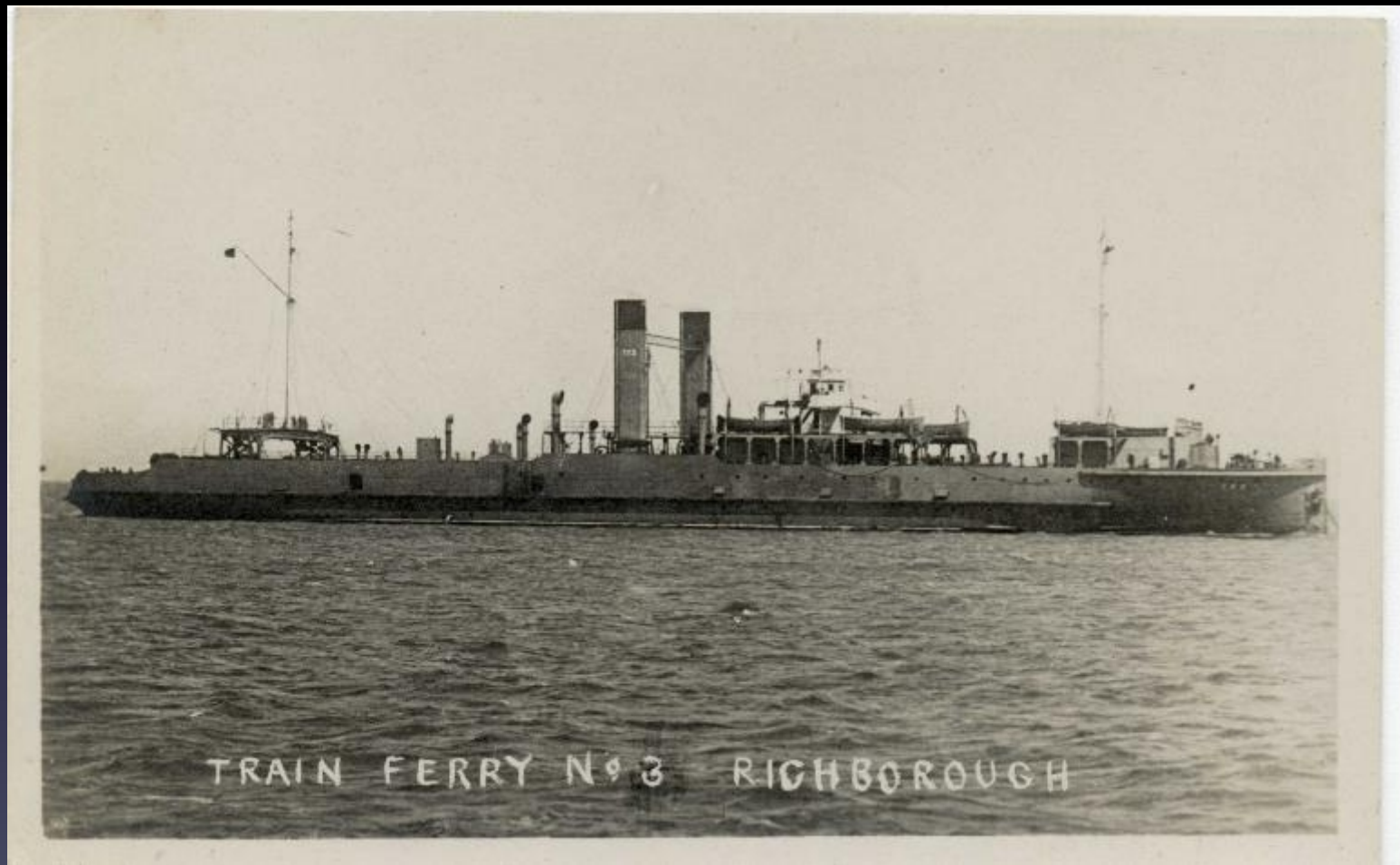
RO RO TRAIN FERRY



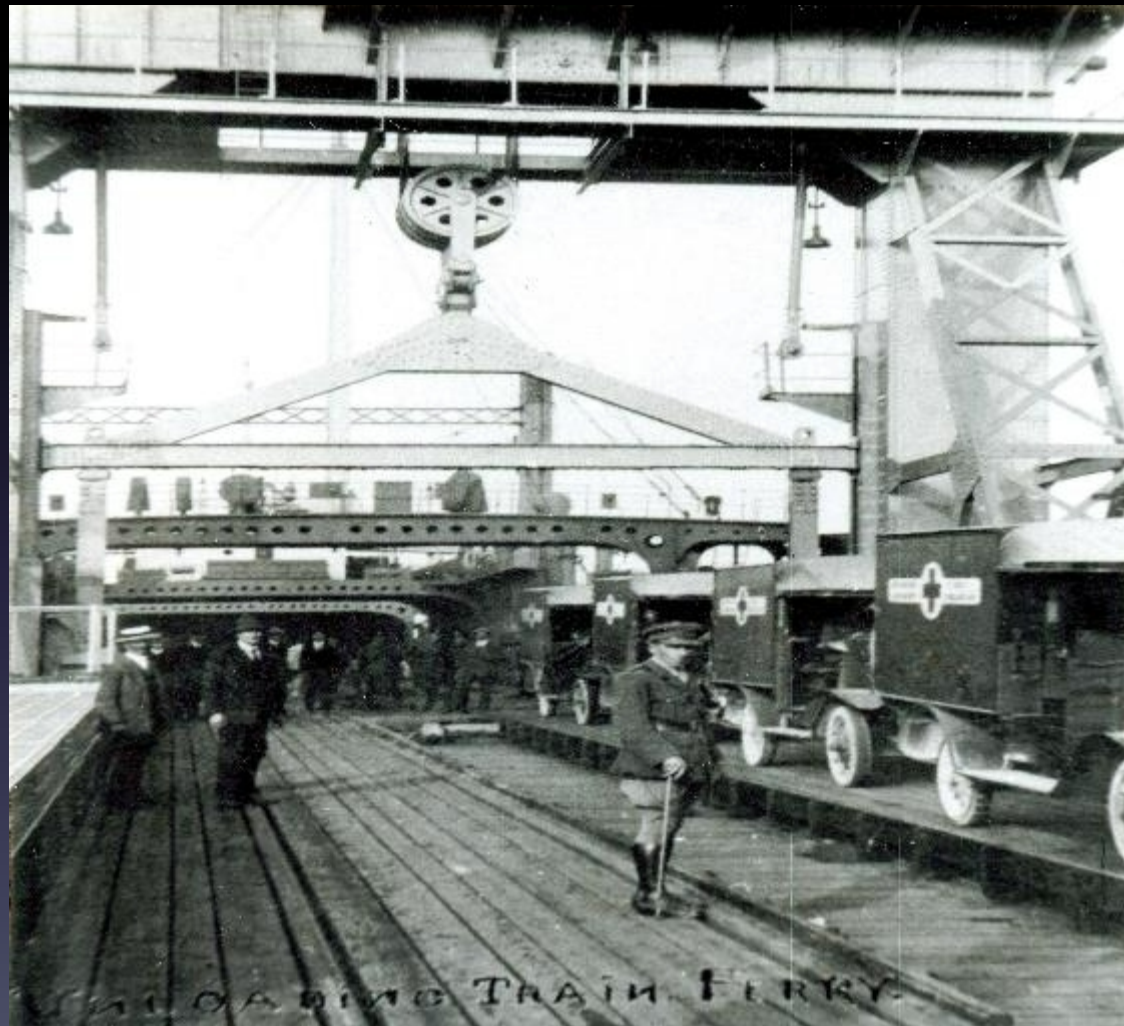
RO RO TRAIN FERRY



RO RO TRAIN FERRY



RO RO TRAIN FERRY



HORACE & HENRY COOK

THIS IS PROPERTY OF
H. K. COOK "THE ANGEL"
1937 - 1947



HORACE COOK R.O.F 1913 - 1920

HENRY
SKOPLER

COOK. R.O.F 1914 - 1916
PILOT AT SANDWICH
BARNS AT
SANDWICH

RE IWT FOOTBALL TEAM



- WHO COMMANDS? WAR OFFICE OR EASTERN COMMAND?
- WAR CABINET SHIPPING PRIORITY FOR VESSELS TO CARRY US TROOPS & SUPPLIES
- INLAND WATERWAYS & DOCKS (ROYAL ENGINEERS)– DEPUTY DIRECTOR OF IWD BRIG. ALLEN-WILLIAMS FROM 5 JUNE 1917
- COL W.H.BRIGGS REGULAR STAFF OFFICER LATE DLI RESERVES APPOINTED BY EASTERN COMMAND TO INVESTIGATE PORT

COL BRIGGS & BRIG ALLEN- WILLIAMS



INITIAL JUDGEMENT SEPTEMBER 1918

SIR MAURICE FITZMAURICE, SIR R ELLIOTT COOPER
& BASIL MOTT – INSTITUTION OF CIVIL ENGINEERS

- REPORT COVERS PERIOD 9 SEPTEMBER – 16 OCTOBER 1918
- ACKNOWLEDGES QUICK, EFFECTIVE CONSTRUCTION
- DESCRIBES OBSTRUCTION FROM INCUMBENTS, & ANOMALIES IN PAY & CLASSIFICATION
- MAKES DETAILED RECOMMENDATIONS FOR EFFICIENCY, TRAINING & REORGANISATION – REFLECTING STAFF COLLEGE (1912)BACKGROUND
- NOTES ‘LUXURY’ WORK AS IF BASE TO BE PERMANENT RATHER THAN TEMPORARY
- THE OBJECTIVE IS TO COMB OUT OFFICERS & MEN FOR FRANCE

THE BRIGGS REPORT - CONFIDENTIAL

- GIVES HISTORY & COMMENTS ON THE LAVISHINGS & ANOMALIES
- WO ROLE IN ALLOCATING MORE & DIVERSE TASKS TO IWD
- NOTE RECRUITMENT OF NEW ARMY TECHNICAL OFFICERS FOR CONSTRUCTION, WHO ARE RETAINED AFTER COMPLETION
- 'OFFICERS SEEM TO HAVE A DIRECT LINE OVER THEIR CO'S

THE BRIGGS REPORT - AFTERMATH

DISPOSAL

THE SHIPS