

Research Space

Journal article

The coproduction illusion: considering the relative success rates and efficiency rates of securing an Education, Health and Care plan when requested by families or education professionals

Soan, Sue and Boddison, Adam

"This is the peer reviewed version of the following article: Boddison, A. and Soan, S. (2021), The Coproduction illusion: considering the relative success rates and efficiency rates of securing an Education, Health and Care plan when requested by families or education professionals. *J Res Spec Educ Needs*. <https://doi.org/10.1111/1471-3802.12545>, which has been published in final form at <https://doi.org/10.1111/1471-3802.12545>. This article may be used for non-commercial purposes in accordance with Wiley Terms and Conditions for Use of Self-Archived Versions. This article may not be enhanced, enriched or otherwise transformed into a derivative work, without express permission from Wiley or by statutory rights under applicable legislation. Copyright notices must not be removed, obscured or modified. The article must be linked to Wiley's version of record on Wiley Online Library and any embedding, framing or otherwise making available the article or pages thereof by third parties from platforms, services and websites other than Wiley Online Library must be prohibited."

Figures

Figure 1: Summary of the process and timescales for a 'request to assess' for an EHC plan

(from Boddison, 2021, p15)

Commented [SS1]: Not referenced in main text

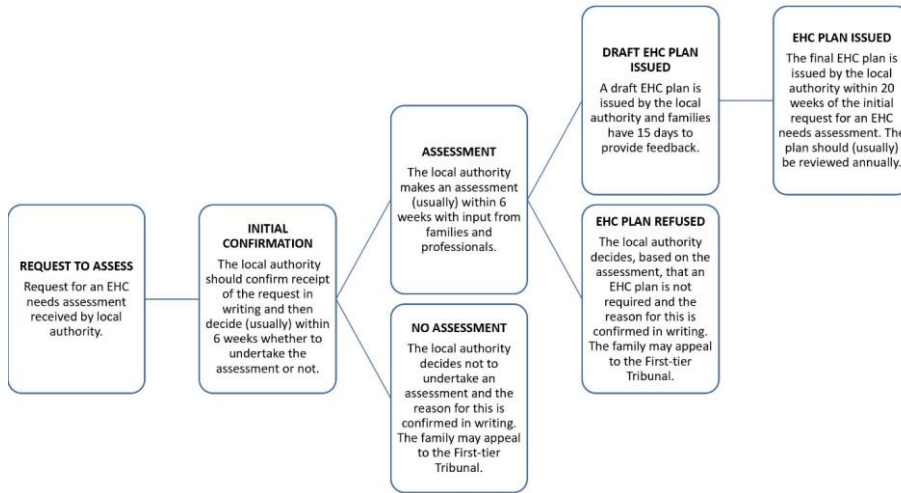


Figure 2: Correlation of efficiency rate data by source (within 20 weeks)

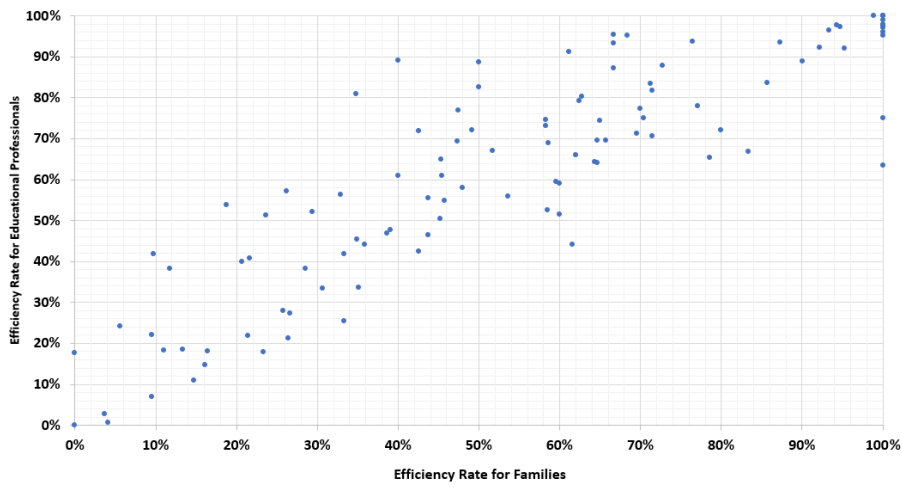


Figure 3: Correlation of success rate data by source

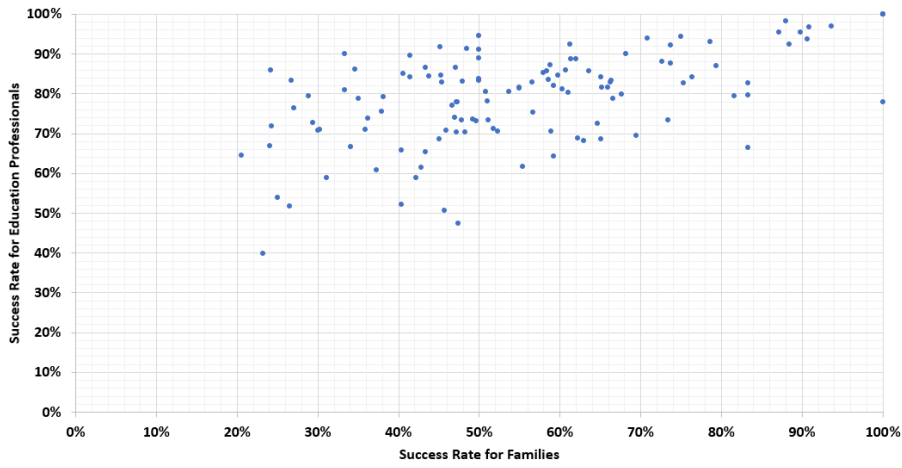


Figure 4: Possible routes from the T-junction

