

**Adaptations in cardiac structure and function following high intensity  
interval training in a physically inactive population**

**By**

**Samuel Bull**

**Canterbury Christ Church University**

**Thesis Submitted**

**For the degree of MSc by Research**

**2018**

## Table of Contents

Acknowledgments.....	3
Abstract.....	4
1.0: Introduction and Literature Review .....	5
1.1: The Cardiovascular System: A Brief Overview .....	5
1.2: Cardiac Cycle.....	5
1.3: Cardiovascular Disease.....	8
1.4: Hypertension.....	8
1.5: Left Ventricular Hypertrophy .....	10
1.6: Myocardial Dysfunction .....	11
1.6: Physical Activity.....	13
1.7: Traditional Aerobic Training .....	16
1.8: High Intensity Interval Training .....	17
1.9: Rationale .....	21
1.10: Hypothesis .....	22
2.0: Method.....	22
2.1: Ethical approval and study population.....	22
2.2: Apparatus.....	23
2.3: Experimental Procedure.....	25
2.3.1. HIIT Group .....	26
2.3.2. Control Group .....	26
2.4: Power Calculation.....	27
2.5: Data Analysis.....	27
3.0: Results.....	27
3.1: Haemodynamic Parameters .....	29
3.2: Cardiac Structural Parameters.....	30
3.3: Cardiac Function Parameters .....	31
3.4: Cardiac Time Intervals.....	33
4.0: Discussion.....	34
4.1: HIIT and Myocardial Compliance.....	34
4.2: Cardiac Function.....	36
4.3: Limitations .....	40
5.0: References.....	42
6.0: Appendix.....	57
6.1: Appendix 3- Physical Activity Readiness Questionnaire (PARQ) .....	57
6.2: Informed Consent .....	60

## Acknowledgments

I would like to thank Dr. Jamie O'Driscoll and Katrina Taylor for supervision and support provided during the writing of this dissertation. I would also like to thank Canterbury Christ Church University sports lab for providing access to the labs and equipment required in order to perform the investigation.

## Abstract

**Purpose:** Physical inactivity is associated with increased risk of cardiovascular disease and myocardial dysfunction. High intensity interval training (HIIT) has been shown to improve cardiovascular health; however, adaptations of cardiac structure and function are uncertain. Therefore, the aim of the present study was to analyse cardiac structural and functional adaptations to a HIIT protocol.

**Methods:** Forty-one physically inactive individuals (males n=20 and females n=21) were randomised into either a 4-week HIIT intervention or control group. The HIIT consisted of 3 x 30-second maximal cycle ergometer sprints against a resistance of 7.5% body weight, separated by 2-minute active recovery periods. In total, 12-sessions were performed. All cardiac structural and functional parameters were measured by quantitative 2D transthoracic echocardiography, performed using a commercially available, portable ultrasound system (Vivid-q, GE Healthcare, Milwaukee, Wisconsin) with a 1.5–3.6 MHz phased array transducer (M4S-RS Matrix cardiac ultrasound probe).

**Results:** The HIIT intervention produced significant improvements in resting heart rate ( $65.59 \pm 10.15$  to  $63.05 \pm 13.42$   $\text{b} \cdot \text{min}^{-1}$ ,  $P=0.013$ ), stroke volume ( $55.48 \pm 16.27$  to  $64.24 \pm 20.62$  ml,  $P=0.015$ ), left ventricular end diastolic volume ( $115.59 \pm 28.34$  to  $131.94 \pm 33.40$  ml,  $P=0.025$ ), E/a ratio ( $1.98 \pm 0.48$  to  $1.95 \pm 0.55$ ;  $P=0.027$ ), average E/e' ratio ( $5.41 \pm 1.17$  to  $5.22 \pm 0.89$ ;  $P=0.002$ ) and isovolumetric relaxation time ( $81.23 \pm 12.85$  to  $77.83 \pm 9.81$   $\text{m} \cdot \text{s}^{-1}$ ;  $P=0.022$ ) compared to the control group.

**Conclusion:** HIIT produced significant improvements in resting haemodynamics and diastolic function. This time efficient exercise intervention produces important improvements in myocardial function in a physically inactive population, which may be of clinical importance in higher risk populations.

## 1.0: Introduction and Literature Review

### 1.1: The Cardiovascular System: A Brief Overview

The cardiovascular system is an organ system that is composed of the heart, blood vessels and blood (Silverthorn, 2009). The primary function of the cardiovascular system is the circulation and transport of materials to and from all parts of the body (Tortora, & Derrickson, 2011). The substances transported by the cardiovascular system can be separated into materials that enter the body from an external environment such as oxygen, nutrients and water, materials moved from cell to cell such as wastes, immune cells, antibodies, hormones and stored nutrients, and waste material that cells eliminate from the body such as metabolic waste, heat, carbon dioxide and urea (Willmore, Costill & Kenny, 2008).

The efficiency of the cardiovascular system to function at optimal levels is dependent upon numerous factors (Willmore, Costill & Kenny, 2008). Cardiac output is the volume of blood pumped by one ventricle in a minute, it has been noted that the average total blood volume is approximately 5 litres from the ventricle per minute (Silverthorn, 2009). However, it has been documented that cardiac output is not a fixed value, it continually changes in response to body demands (McArdle, Katch, & Katch, 2010). It has been found that during exercise cardiac output may increase to 30-35 L·min<sup>-1</sup> (McArdle, Katch, & Katch, 2010). Homeostatic changes in cardiac output is a result of varying heart rate, stroke volume or both (Berne & Levy. 1992). Stroke volume, the volume of blood ejected from the left ventricle per contraction, is directly related to the force generated by the cardiac muscle during systole (Berne & Levy. 1992). The force of ventricular contraction is affected by two parameters, the length of muscle fibres at the beginning of contraction and the contractility of the heart (Silverthorn, 2009). The energy of contraction can be increased by preloading of the myocardium during diastole through raising the end-diastolic pressure, which enhances the contractile energy; this relationship is known as the Frank-Starling law of the heart (McArdle, Katch, & Katch, 2010). However, it has been documented that if an individual has a high risk of cardiovascular disease, the function of the cardiovascular system can become significantly impaired (Kobirumaki-Shimozawa *et al.* 2014).

### 1.2: Cardiac Cycle

The cardiac cycle refers to the repeating sequence of myocardial contraction and relaxation (Stouffer, Klein & McLaughlin, 2017). The contraction phase is referred to as systole and the

relaxation period is known as diastole (Nishimura & Tajik, 1997). As the human heart has four chambers there is atrial systole, atrial diastole, ventricular systole and ventricular diastole (Levick, 2010). Atrial contraction occurs during ventricular diastole and atrial relaxation occurs during ventricular systole (Nishimura & Tajik, 1997). The heart therefore has a two-step pumping action (Powers & Howley, 2001). The left atrium and right atrium simultaneously contract, emptying atrial blood into the ventricles (Cox *et al.* 1995). Approximately 0.1 seconds after atrial contraction, the ventricles contract and deliver blood into both the systemic and pulmonary circuits (Levick, 2010). The cardiac cycle is divided into four phases based on the positions of the inlet and outlet valves (Levick, 2010). These phases are ventricular filling, isovolumetric contraction, ejection and isovolumetric relaxation (Levick, 2010).

Ventricular filling has two major determinants, ventricular relaxation and effective chamber compliance (Nishimura & Tajik, 1997). At rest, ventricular diastole occupies approximately two-thirds of the cardiac cycle, which provides adequate time for the ventricles to fill (Powers & Howley, 2001). During the initial rapid filling phase, ventricular pressure falls, which is due to the relaxing ventricle recoiling elasticity from its deformed end-systolic shape. Once the pressure in the left ventricle drops to below the pressure in the left atrium, the mitral valve opens, causing accumulated blood from the atrium to be sucked into the ventricle (Nishimura & Tajik, 1997). As ventricular filling begins, the atria is also in diastole, allowing passive blood flow from the great veins through the atria and the open atrioventricular valves into the ventricles (Powers & Howley, 2001). This initial phase is very fast lasting approximately 0.15 seconds (Pocock & Richards, 2006). Further filling is caused by the venous pressure, which distends the ventricle and causes ventricular pressure to rise gradually (Pocock & Richards, 2006). The finally third stage of the filling phase is atrial contraction (Pocock & Richards, 2006). At the end of the filling phase the volume of blood in the ventricle is known as end-diastolic volume (EDV) (Pocock & Richards, 2006). The ventricular filling velocity has two main components; firstly the early (E) diastolic phase which causes ventricular suction, and second, a late phase created by atrial contraction (A) (Keren *et al.* 1988). The E/A ratio is of importance as it can be used as a diagnostic measure, since the ratio is reduced in diastolic dysfunction (Paulus *et al.* 2007).

Ventricular systole follows atrial systole; this is divided into a brief isovolumetric phase and a longer ejection phase which lasts approximately 0.35 seconds (Levick, 2010). As the pressure in the ventricles rises just above atrial pressure the atrioventricular valves are closed by the

reversed pressure gradient (Pocock & Richards, 2006). During atrioventricular valve closure the backflow of blood is minimal due to vortices approximate the valve cusps during the late filling phase (Pocock & Richards, 2006). As the ventricles temporarily become a closed chamber, the tension of its contracting walls causes the pressure of the trapped blood to rise rapidly (Levick, 2010).

As the ventricular pressure exceeds arterial pressure, the outflow valves are pushed open and ejection begins (Levick, 2010). Initially there is a rapid ejection phase which results in three quarters of the stroke volume being ejected, this makes up half of the ejection phase (Levick, 2010). During this rapid ejection phase the blood is ejected faster than it can drain away through the peripheral vessels, therefore, most of the stroke volume is accommodated temporarily in the distended elastic arteries (Nishimura & Tajik, 1997). This causes the arterial pressure to increase to its maximum systolic level (Pocock & Richards, 2006). During ejection, the cusps of the open aortic valve lie close to the entrances to the coronary arteries, but do not block them because vortices behind the cusps cause them to float between midstream and the aorta wall (Pocock & Richards, 2006). During late systole, ejection rate slows down, when the rate at which aortic blood is draining away into the peripheral circulation now exceeds ventricular ejection, pressure begins to fall (Pocock & Richards, 2006). Although ventricular pressure drops to 2-3mmHg below arterial pressure, the outward momentum of the blood prevents immediate closure of the aortic valve (Stouffer, Klein & McLaughlin, 2017). However, the reversed pressure gradient causes the outflow to gradually decelerate, until a brief backflow closes the outflow valve (Levick, 2010). This backflow is typically less than 5% of the stroke volume, although this can increase greatly if the aortic valve is incompetent (Levick, 2010). Valve closure creates a notch in the arterial pressure trace called the incisura (Pocock & Richards, 2006). For the rest of the cycle, the arterial pressure decreases gradually as blood drains away into the periphery (Stouffer, Klein & McLaughlin, 2017). In a resting human, only two thirds of the end diastolic blood volume is ejected (Levick, 2010). Stroke volume is 70-80ml and the end diastolic volume is approximately 50ml (Levick, 2010). Ejection fraction is the stroke volume divided by end diastolic volume, with a normal value of >55% (Pocock & Richards, 2006). The end systolic volume serves as reserve that can be drawn on to raise the stroke volume and ejection fraction during exercise (Levick, 2010).

As the aortic and pulmonary valves close, the ventricles briefly become closed chambers, the elastic recoil of the deformed, relaxing myocardium causes the ventricular blood pressure to

fall rapidly (Levick, 2010). As ventricular blood pressure falls below atrial pressure, the pressure difference pushes open the atrioventricular valves, terminating the isovolumetric relaxation phase (Pocock & Richards, 2006). Blood floods in from the atria which have filled during ventricular systole, starting the next cardiac cycle (Levick, 2010).

### 1.3: Cardiovascular Disease

Cardiovascular disease (CVD) is the largest contributor to global mortality (Mills et al, 2015), accounting for nearly half of the 36 million annual non-communicable disease deaths, surpassing communicable diseases as the world's major disease burden (Smith *et al.* 2012). CVD is approximately accountable for 17.3 million deaths every year (Townsend et al, 2015) and is responsible for 30.8% of all deaths annually (Uppoor et al, 2015). By 2030, CVD is projected to account for 25 million deaths worldwide (Okwuosa et al, 2016). In 2014, CVD was the second most common cause of death in the United Kingdom (UK), accounting for approximately 155,000 deaths, 27% of all deaths within the UK (Townsend et al, 2015). CVD was responsible for approximately 41,000 premature deaths in the UK, in total 25% of premature deaths in men and 17% of premature deaths in women (Townsend et al, 2014). More than £6.8 billion was spent on treating CVD within the NHS in England in 2012/ 2013 (Townsend et al, 2014). The biggest single cause of death in the UK from CVD is a chronic disease known as coronary artery disease (CAD), which accounts for more than 73,500 deaths each year (Bhatnager et al, 2015). CAD was responsible for 15% of male deaths and 10% of female deaths in the UK in 2014 (Townsend et al. 2015). CAD is a condition where the arteries become hardened, narrowed and less flexible by the build-up of lipids, inflammatory cells, and connective tissue within their intimal layer, the gradual build-up of which stops the delivery of oxygenated blood to the heart (McArdle, Katch & Katch, 2010).

### 1.4: Hypertension

Chronic high blood pressure, or hypertension, is the most predominant pre-cursor of CVD and deaths globally (He & Whelton, 1997). Hypertension has been found to affect approximately 1 billion individuals worldwide (Krum *et al.* 2014), estimated to account for 7.6 million deaths each year attributable to hypertension (Chow *et al.* 2013). It is expected that by 2025 the number of individuals affected with hypertension is expected to rise to 1.6 billion (Krum *et al.* 2014). The National Health Service (NHS) was shown to spend more than £6.8 billion in 2012/2013 on the treatment of CVD (Townsend *et al.* 2014). Hypertension has



been shown to affect one in four adults within the UK and as a result one in five heart attacks is attributed to hypertensive heart disease (Thompson, 2015).

Hypertension has been linked with having an increased risk of developing cardiovascular diseases (Chobanian *et al.* 2003), such as CAD (Stamler, Stamler & Neaton, 1993), stroke (Lee *et al.* 2004), heart failure (Levy *et al.* 1996), myocardial infarction (Uppoor *et al.* 2015), left ventricular hypertrophy (Messerli & Aepfelbacher, 1995), chronic kidney disease (Sarnak *et al.* 2003) and other chronic diseases such as retinopathy (Wong & Mitchell, 2004), cerebral haemorrhage (Qureshi *et al.* 2001) and hypertensive encephalopathy (Schwartz *et al.* 1992). For people suffering with hypertension the risk for cardiac complication has been shown to be greater (Bogousslavsky *et al.* 1996), for example patients who have ischaemic heart disease are 40% more likely to have a fatal myocardial infarction when they have previously suffered with hypertension (Dunn, 1983). The risk of CVD has been shown to double with every 20 and 10 mmHg increase in systolic and diastolic blood pressure respectively after the age of 40 (Kannel, 2009).

Hypertension induces endothelial dysfunction (Chobanian *et al.* 2003), which is considered the initiating step of atherosclerosis pathogenesis (Huynh *et al.* 2011). Atherosclerosis is a multifocal, immunoinflammatory disease of medium-sized and large arteries stimulated by lipids (Falk, 2006). Due to inflammation, the smooth muscle cells and endothelial cells proliferate in the intima, creating extracellular matrix molecules which form into atherosclerotic plaques (Ross, 1999). This may result in flow limiting stenosis and cause clinical symptoms such as stable angina (Nabel & Braunwald, 2012). This process has been shown to result in poorer quality of life (Battersby *et al.* 1995), chronic diseases and possibly a fatal myocardial infarction (Gazmararian *et al.* 2003; Rakugi *et al.* 1996).

Blood pressure ranging from 120-139mmHg systolic or from 80-89mmHg diastolic in adults is defined as pre-hypertension (Chobanian *et al.* 2003). Pre-hypertension has increasingly been recognized as a contributing factor to CVD risk (Santos *et al.* 2016). The relative risk of CVD in persons with pre-hypertension has been found to be 2.3-fold higher than for those with optimal blood pressure (Kshirsagar *et al.* 2006), this risk has been found to be even greater in individuals with other risk factors such as diabetes, low-density lipoprotein 100-129 mg·dl<sup>-1</sup>, or body mass index greater than 30 kg·m<sup>2</sup> (Kshirsagar *et al.* 2006). Recent meta-analyses have found that pre-hypertension increases the risk of CAD and stroke independent of other cardiovascular risk factors (Huang *et al.* 2015; Huang *et al.* 2013; Guo *et al.* 2013).

A recent prospective epidemiologic study by Santos *et al.* (2016), designed to investigate atherosclerotic disease in 4871 participants found that pre-hypertension may be associated with preclinical target organ damage. The study categorised the participants into 3 groups: optimal blood pressure (blood pressure <120mmHg systolic and <80mmHg diastolic) (n = 402), pre-hypertension (n = 537) and hypertension (n = 3932) and analysed the alterations in cardiac structure and function between the groups. The study found that individuals with pre-hypertension had higher left ventricular mass index and wall thickness and higher prevalence of abnormal left ventricular geometry compared with those who have optimal blood pressure, however both are lower than individuals with hypertension. Additionally, the participants with pre-hypertension were shown to have impaired diastolic parameters such as E/A ratio, E' and E/E', and had a higher prevalence of mild and moderate-severe diastolic dysfunction compared with those with optimal blood pressure, however no differences in systolic parameters were observed. The results from this study coincide with the generally accepted notion that pre-hypertension is associated with an augmented risk of progression to hypertension (Leitschuh *et al.* 1991), and the linear and continuous relationship between blood pressure levels and cardiovascular events (Lewington *et al.* 2002). They also suggest that even mildly elevated blood pressure within the normal range is associated with cardiac end-organ damage.

### 1.5: Left Ventricular Hypertrophy

Systemic hypertension has been shown to cause an increase to myocardial workload, which has been found to lead to cardiac enlargement because of increased rate of myocardial and hyperplasia cells or continuation of hyperplasia beyond the normal period of hyperplastic growth (Oparill, Bishop & Clubb, 1984). As an effect to cellular enlargement, structural remodelling of the myocardial cells, which consists of modifications in the relative proportions of cellular organelles and in the ultrastructure of individual organelles, occurs during the development of hypertrophy in the heart (Oparill, Bishop & Clubb, 1984). The materialisation of left ventricular hypertrophy (LVH) is a strong independent risk factor for cardiovascular disease and all-cause mortality (Laine *et al.* 1999). LVH is the most significant predictor of adverse cardiovascular outcomes in the hypertensive population, and is an independent risk factor for CAD, sudden death, heart failure and stroke (Gradman & Alfayoumi, 2006). Patients who suffer with hypertension and LVH, because of myocardial

workload, are at a 10-fold greater risk of developing cardiovascular disease than those with hypertension and normal LV mass (Vogt et al, 1993).

### 1.6: Myocardial Dysfunction

CVD such as hypertension, CAD and cardiomyopathies often lead to systolic and diastolic dysfunction (Redfield *et al.* 2003). Diastolic dysfunction is characterised by an increased resistance to filling with increased filling pressures (Federmann & Hess, 1994). There is growing recognition that congestive heart failure caused by a predominant abnormality in diastolic function is both common and causes significant morbidity and mortality (Zile & Brutsaert, 2002). Research has shown that diastolic dysfunction is an independent predictor of mortality in patients with normal left ventricular ejection fraction (AlJaoundi *et al.* 2012). Approximately half of all patients suffering with congestive heart failure have diastolic dysfunction without reduced ejection fraction (Redfield *et al.* 2003). Diastolic dysfunction is graded as either mild (impaired relaxation), moderate (pseudonormal), or severe (restrictive filling) (AlJaoundi *et al.* 2012). The more advanced the stage is, the higher the filling pressures are and the worse the outcomes (AlJaoundi *et al.* 2012).

Diastolic dysfunction develops early in most cardiac diseases and leads to the elevation of LV filling pressures (Nagueh *et al.* 2009). Diastolic dysfunction refers to abnormalities of active myocardial relaxation and passive ventricular filling (Zile & Brutsaert, 2002). It can be attributed to one of four underlying conditions (Kapila & Mahajan, 2009). The most common cause is slow myocardial relaxation, due to myocardial ischaemia, causing a reduced rate of left ventricle pressure decline. In patients with LVH any degree of ischaemia or functional impairment of relaxation is greater, making them more susceptible to diastolic dysfunction (Ix *et al.* 2006). A second condition is impaired peak left ventricle filling rate due to the failure to generate an adequate transmitral pressure gradient, this occurs typically to either elevated left ventricular pressures or the inability to generate left ventricular suction (Kapila & Mahajan, 2009). Another condition is a result of alterations in cytoskeleton properties leading to passive viscoelastic stiffness of the left ventricle. Myocardial fibrosis is initiated by neurohumoral responses that leads to decreased left ventricular compliance (Kapila & Mahajan, 2009). The final underlying condition causing diastolic dysfunction is mechanical obstruction to left ventricular expansion raising left ventricular pressure to transmitral pressure more rapidly, terminating left ventricle filling earlier (Kapila & Mahajan, 2009). The

net effect of all these pathological processes is a higher LV end-diastolic pressure for any given LV end-diastolic volume (Kapila & Mahajan, 2009).

Di Bello *et al.* (2010) study, examining left ventricular mechanics in persons with pre-hypertension, found that there is evidence of abnormalities in early and global diastolic function. Compared to normotensive individuals the peak E wave was found to be progressively lower in pre-hypertension and hypertension patients, however, late diastolic left ventricular functional phase was comparable across the three groups. Analysis of the pulsed wave tissue Doppler imaging at mitral annulus level, showed that there is subtle modification of diastolic longitudinal function ( $E'$ ) and the  $E/E'$  ratio (a non-invasive measure of left ventricular filling pressure) showed a progressive and significant increase in pre-hypertension and hypertension patients in comparison with normotensive individuals, confirming that only the early phase of longitudinal diastolic function is impaired. This indicates that mild left ventricular diastolic dysfunction occurs during pre-hypertension. However, it is important to note that the study used a relatively small population, therefore the results cannot be generalised to the pre-hypertensive population, further longitudinal investigations are needed to better clarify these preliminary findings.

Left ventricular failure can be separated into systolic and diastolic dysfunction (Hess, 1993). Systolic dysfunction is determined by an impaired pump function with reduced ejection fraction and an enlarged end-diastolic chamber volume (Federmann & Hess, 1994). The most common cause of heart failure is left ventricular systolic dysfunction (McDonagh *et al.* 1998). Most cases of systolic dysfunction are a result of end stage CAD with either a previous myocardial infarction or with a chronically under-perfused myocardium (Fox *et al.* 2008). Other common causes include hypertensive heart disease, idiopathic dilated cardiomyopathy, valvular heart disease and congenital heart disease (Redfield *et al.* 2003).

Systolic dysfunction can be defined as having a left ventricular ejection fraction less than 40% (Vasan *et al.* 1999). In chronic heart failure this is most likely due to alterations in the transduction mechanisms regulating cardiac excitation-contraction coupling (Federmann & Hess, 1994). This causes a loss of cardiac inotropy causing a downward shift in the Frank-Starling curve, resulting in a decreased stroke volume and a compensatory rise in preload because of incomplete ventricular emptying, causing an increase in ventricular end-diastolic volume and pressure (Hess, 1993). The rise in preload is compensatory because it activates the Frank-Starling mechanism to help maintain stroke volume despite the loss of inotropy

(Hess, 1993). The negative adaptations as a consequence of these compensatory mechanisms is higher wall stress and higher oxygen requirements, these effects are reduced by subsequent myocardial hypertrophy, activation of the baroreceptor reflex and release of atrial natriuretic peptide (Federmann & Hess, 1994). The baroreceptor reflex inhibits sympathetic activation and atrial natriuretic peptide exerts diuretic and vasodilating effects (Federmann & Hess, 1994).

Patients with heart failure as a result of left ventricular systolic dysfunction regularly develop mitral regurgitation due to unfavourable alterations in ventricular geometry (Wu *et al.* 2005). This leads to deformation of the normal mitral valve apparatus and dilation of the ventricle chamber, which in turn leads to incomplete closure of the mitral valve cusps (Kono *et al.* 1992). The presence of mitral regurgitation in the setting of systolic dysfunction is associated with increased mortality (Robbins *et al.* 2003).

#### 1.6: Physical Activity

In recent decades, major advances have been made in the understating of the pathogenesis of CAD and in the development of diagnostic methods and treatment modalities (Pyörälä *et al.* 1994). Measures aimed at CAD prevention focus on modification of lifestyles and reducing risk factors that are known to be casually linked with the development of atherosclerosis, the underlying disorder for CAD (Thompson *et al.* 2003). Four areas of risk factor modification have received particular attention, specifically cessation of smoking, increase exercise participation, treatment of elevated blood pressure and hypercholesterolaemia, because these risk factors have been considered to be the four major risk factors of CAD (Chobanian *et al.* 2003). There is evidence that indicates that risk factor modification is also effective in reducing the risk of recurrent CAD events in patients with clinically manifest CAD and, more recently, evidence that this can lead to a retardation or even a halt to the progression of coronary atherosclerosis. It has also been shown that risk factor modification reduces CAD risk in asymptomatic high risk subjects (Pyörälä *et al.* 1994).

Elevated blood pressure was the first risk factor to become a subject of specific recommendations (Pyörälä *et al.* 1994). It has been well reported that hypertension is a modifiable risk factor that when treated can reduce the risk of mortality (Sacco *et al.* 1997). Changes in life style such as participating in regular exercise (Ebrahim & Smith, 1998), reducing salt intake (Meneton *et al.* 2005), and reducing alcohol intake (Puddey, Beilin &

Vandongen, 1987) have been shown to positively affect the treatment of hypertension (Chobanian *et al.* 2003). Prospective epidemiological studies give strong support to the view that a sedentary lifestyle is associated with an increased risk of hypertension and CAD (Pyörälä *et al.* 1994).

Physical inactivity can be used as a term to identify individuals who do not meet the recommended level of physical activity (Townsend *et al.* 2015). It has been estimated that physical inactivity contributes to approximately 10% of all deaths worldwide from non-transmissible diseases (Lee *et al.* 2012). Although progress has been made in the prevention, detection, control and treatment of hypertension, it has been established that the adoption and adherence to long term exercise and fitness programs are much lower than expected. It has been reported that 31% of the global population are not currently meeting the recommendations for exercise (Hallal *et al.* 2012). Approximately only 50% of all individuals who begin participating in an exercise program will continue the habit for a period longer than 6 months (Bartlett *et al.* 2011). The issue of non-adherence is vital as the beneficial health effects of exercise are only maintained if exercise is maintained for extended periods of time (Fletcher *et al.* 1996). If the issue of non-adherence to exercise was addressed by developing strategies to improve exercise initiation, then the cardiovascular risks associated with hypertension could be reduced (King *et al.* 1992). Additionally, it has been noted that approximately 240,000 newly diagnosed chronic diseases each year have been attributed to physical inactivity (Martin *et al.* 2009). The national cost of medical bills attributed to physical inactivity within the UK has been estimated to amount to £1.06 billion (Allender *et al.* 2007).

Physical activity can be defined as any bodily movement produced by skeletal muscles that results in energy expenditure beyond resting expenditure (Thompson *et al.* 2003). The recommended amount of physical activity performed on a weekly basis is currently 30 minutes of tradition aerobic exercise 5-7 days a week (Townsend *et al.* 2015) or 20 minutes vigorous intensity exercise 3 days per week (Haskell *et al.* 2007). Regular physical activity has been shown to produce cardiovascular adaptations that increase exercise capacity, endurance and skeletal muscle strength (Thompson *et al.* 2003). Maximal aerobic capacity increases due to the cardiovascular systems increased capacity to deliver oxygen to the muscles, via an increased cardiac output, and the capability of the muscles to extract and utilise oxygen, which is reflected by the greater arteriovenous oxygen difference (Thompson,

2005). This process is demonstrated by the Fick equation, which is calculated as maximal aerobic capacity = cardiac output x arteriovenous oxygen difference (Albouaini *et al.* 2007).

It is also evident that regular physical activity can be a low cost non-pharmacological intervention in the prevention and management of chronic diseases (Thompson *et al.* 2003). Lee & Skerrett (2001) found that there is a transparent inverse relationship between the capacity of physical activity and all-cause mortality rates in men and women, of all ages, and that adherence to the recommended guidelines for physical activity resulted in approximately 20-30% reduction in all-cause mortality. It has been hypothesised that if worldwide participation in physical activity increased by approximately 10%, then almost 500,000 deaths each year as a consequence of physical inactivity could be averted (Lee *et al.* 2012).

Research shows that habitual physical activity prevents the development of CAD and reduces symptoms in patients with established cardiovascular disease (Durstine *et al.* 2000). Regular physical activity has been shown to cause adaptations in vascular function as a result of arterial sheer stress being used as a stimulus to trigger anti-atherosclerotic adaptations and vascular remodelling within the vascular system, helping to prevent the onset of age-related decline in indices of vascular function (Green, 2009). These adaptations are supported by Haskell *et al.* (1993), who found that physically active males have an increased coronary artery size and dilation capacity when compared to sedentary individuals. It has been documented that physically active individuals have endothelial adaptations in conduit arteries as a result of increased shear stress rate as a result of exercise (Green *et al.* 2011). The possible mechanisms prompting vasodilatory adaptations include increases in endothelial nitric oxide synthase and prostaglandin release as well as declines in free-radical-mediated nitric oxide degradation and sympathetic vasoconstrictor tone (Heydari, Boutcher & Boutcher, 2013). This increases the number of circulating endothelial progenitor cells, which results in greater endothelial regeneration and improved endothelial function (Hambrecht *et al.* 1998), reducing the risk of hypertension, the greatest precursor to cardiovascular disease (He & Whelton, 1997). The reduced risk of hypertension is supported by Fagard (2006), who found that physically active individuals have lower levels of plasma renin activity and less plasma noradrenaline compared to sedentary individuals. Following regular bouts of physical activity, heart rate variability and stroke volume have been shown to increase (Fletcher *et al.* 2013). This is due to increased arterial baroreflex sensitivity because of inhibition of the sympathetic nervous system and activation of the parasympathetic nervous system (Lanfranchi & Somers, 2002).

Further research by Barlow *et al.* (2012) support the notion that it is beneficial to have a more physically active lifestyle compared to sedentary individuals. Over a  $27 \pm 2$  year period, it was shown that it was significantly ( $P=0.001$ ) more beneficial to be physically active, as these individuals had greater survival rates and were less likely to suffer from cardiovascular diseases compared to physically inactive individuals. Delaying and preventing the onset of hypertension may therefore have a large impact on public health, especially in individuals who are at a high risk for cardiovascular events (Mosca *et al.* 2004), such as established CAD patients (De Backer *et al.* 2003), asymptomatic individuals (Greenland, Smith & Grundy, 2001) and obese individuals (Mosca *et al.* 2004). It has also been documented that regular physical activity reduces the risk of other chronic diseases, including type 2 diabetes (Knowler *et al.* 2002), osteoporosis (Vuori, 2001), obesity (Wing & Hill, 2001), depression (Pollock, 2001) and cancer of the breast (Breslow *et al.* 2001) and colon (Slattery & Potter, 2002).

### 1.7: Traditional Aerobic Training

In accordance with current guidelines, adults are advised to participate in at least 150 minutes of moderate intensity exercise each week (Townsend *et al.* 2015). It has been documented that partaking in this amount of exercise, working at an intensity of 40-59%  $HR_{max}$ , is beneficial to cardiovascular health by reducing cardiovascular risk factors (Thompson *et al.* 2003). This is demonstrated by the Cornelisson & Fargard (2005) meta-analysis, which included 72 trials of traditional aerobic training programmes, 105 study groups and 3936 participants consisting of normotensive, pre-hypertensive and hypertensive participants. The reported findings indicated that a variety of variables associated with being beneficial to cardiovascular health improved. It is reported that  $VO_{2peak}$  significantly increased ( $P < 0.001$ ), which is an indicator of improved cardiovascular health (Keteyian *et al.* 2008). Significant reductions in systolic blood pressure ( $P < 0.001$ ) and diastolic blood pressure ( $P < 0.001$ ) were also reported, as well as a significant reduction in resting heart rate ( $P < 0.001$ ). The impact on cardiac structure and function was not reported.

Empirical research surrounding traditional aerobic training has also shown that it may lead to improvements in cardiac structure and function (Andrea *et al.* 2002). A relationship between athletic participation and specific cardiac morphology has been well established. Increased left atrial size and left ventricular mass, wall thickness, and chamber size have been documented among trained athletes, and some recent reports have also noted similar characteristics in the right ventricle (Andrea *et al.* 2002; Baggish *et al.* 2007). An early study



by Fagard *et al.* (1983) assessing the effects of traditional aerobic training versus a physically inactive control group, showed that 12 male cyclists aged between 17-35 years old in competitive season compared with the 12 control subjects, matched for age, height and weight, have significantly greater left ventricular internal dimensions ( $P < 0.05$ ) and increased wall thickness ( $P < 0.05$ ), with similar left ventricular function.

A more recent study by Baggish *et al.* (2007) reported that 40 recreational athletes, had significant training-specific changes in cardiac structure and function following a 90-day aerobic training programme. Following the aerobic training programme, the participants experienced significant increases in left ventricular mass ( $P < 0.05$ ) and end-diastolic volume ( $P < 0.001$ ) and a non-significant trend toward increased wall thickness. It was also reported that stroke volume was increased following the training protocol, however, resting cardiac output (due to a marked reduction in resting heart rate) was significantly reduced. These findings correlate with the previous study in that by following an aerobic training programme the participants experienced left ventricular hypertrophy and biatrial enlargement. In contrast the participants Bassigh's study experienced significant increases in LV diastolic tissue velocities, which were positively correlated with the magnitude of LV mass increase. In aggregate, this data demonstrates direct evidence that traditional aerobic training produces left ventricular hypertrophy with associated augmentation of left ventricular function.

It has been suggested that due to the time commitment and the physical challenges of performing aerobic training, many population groups find it challenging to adhere to an aerobic training programme (Gillen & Gibala, 2013). Therefore, it could be postulated that current physical activity guidelines could be a factor influencing non-adherence to exercise programmes and further research is needed to explore the adoption of vigorous intensity exercise.

### 1.8: High Intensity Interval Training

More recently, research has focused on the intensity of exercise, with high intensity interval training (HIIT) fast becoming a popular alternative to more traditional aerobic training programmes (Gibala *et al.* 2012). HIIT is a time-efficient exercise strategy that has been documented to elicit beneficial adaptations in cardiorespiratory function as well as enhancements in metabolic health (Schoenfeld & Dawes, 2009). Compared to more traditional aerobic training programmes, HIIT has been shown to produce significantly

greater improvements in 24-hour ambulatory systolic blood pressure and diastolic blood pressure,  $VO_{2max}$ , total peripheral resistance, and left ventricular systolic and diastolic function in patients with hypertension and pre-hypertension (Sharman, La Gerche & Coombes, 2015). It has also been reported that sessions of HIIT (4 four minute intervals at 95%  $HR_{max}$ ) is more efficient than aerobic exercise (45 minutes at 70%  $HR_{max}$ ) as it allows for greater improvements in cardiac output and stroke volume which can reduce strain upon the cardiac muscle, reducing the risk of metabolic disorders (Helgerud *et al.* 2007).

HIIT refers to brief intervals of vigorous activity combined with periods of low activity or rest, and produces a strong cardiac response compared with aerobic exercise (Gibala *et al.* 2012). It has been recognised that HIIT using a 30-second Wingate protocol is sufficiently long enough to allow for developing the maximal glycolytic power and short enough for maximal effort to be exerted until the end of the bout (MacInnis & Gibala, 2017). The recovery period performed at a reduced intensity is designed so that the cardiopulmonary system does not fully recover to near resting levels, whilst allowing the individual enough recovery to be able to repeat the next bout of high intensity exercise (MacInnis & Gibala, 2017). Research indicates that HIIT performed 3 times per week is adequate to decrease markers of chronic disease in both healthy individuals and people with cardio metabolic disorders (Shirayev & Barclay, 2012). As lack of time remains one of the main cited barriers to regular exercise participation, HIIT is a time-efficient exercise strategy that could be used to encourage exercise participation by fitness professionals and health practitioners (Gillen & Gibala, 2013).

The adaptations observed after HIIT is said to be due to the metabolic rate being raised for a brief period that is considerably higher than that of traditional aerobic training, this permits a longer duration of a training period spent at a higher percentage of  $VO_{2max}$  (MacInnis & Gibala, 2017). Research suggests that the relative intensity of cycling is more important than the duration in relation to all-cause mortality in healthy subjects (MacInnis & Gibala, 2017).

There is increasing evidence that supports HIIT as a well-tolerated and safe training method, even amongst populations with high risk of cardiometabolic disease, the protocol can be adapted to the specific needs of the individual, with the work periods and recovery periods simply being adjusted to create a variety of different HIIT protocols (Arena *et al.* 2013). A meta-analysis on patients with lifestyle induced chronic diseases from Weston, Wisloff & Coombes (2014) support the potential cardiovascular health benefits of performing HIIT over

aerobic training programmes. Ten studies were included in the meta-analysis, all of which followed a randomised control trial protocol, assessing a cardio-metabolic chronic disease population, where physical inactivity was the main contributor. It can be noted that the meta-analysis showed greater increases in  $V_{O_{2max}}$  in the HIIT programme by 19.4% compared against a 10.9% increase in the aerobic training programme. The increase in  $V_{O_{2max}}$  because of exercise training could be explained due to a higher maximum cardiac output and greater extraction of oxygen from the systemic circulation demonstrated in the participants, reflecting both central and peripheral adaptations (Fletcher *et al.* 1990). Greater central adaptations demonstrated in the meta-analysis include improved left ventricular ejection fraction in the HIIT group with no change in the aerobic training group, highlighting the potential for further left ventricular remodelling with HIIT (Wisloff *et al.* 2007). It was also found that cardiac function was improved with HIIT, in terms of stroke volume, mitral annular excursion, ejection velocity and systolic mitral annular velocity, demonstrating improvements in systolic and diastolic function that were not found with the aerobic training group. Increased maximal rate of calcium ions ( $Ca^{2+}$ ) uptake and greater reductions in resting blood pressure were also reported in the HIIT group.

The effects of HIIT and the subsequent clinical benefits in both healthy and high-risk populations have been well documented within empirical literature (Gilbala *et al.* 2012). Evidence based research has investigated the effects of acute and chronic HIIT protocols on cardiac structure and function in healthy populations and chronic disease patients. A study by Cote *et al.* (2013) demonstrated that an acute bout of HIIT can cause alterations in cardiac mechanics in healthy individuals. Thirty-nine normally active and endurance trained men and women completed an echocardiographic evaluation of left ventricular function before and after an acute bout of HIIT. It was reported that following the HIIT session fractional shortening, wall stress, septal and lateral wall tissue velocities, and isovolumetric relaxation time were reduced ( $P < 0.05$ ). It was also found that males demonstrated greater reductions in cardiac contractility compared to females, which may reflect differential intrinsic myocardial relaxation properties, the mechanisms of which require further research. The findings demonstrate that a single session of HIIT can alter cardiac function, leading to significant improvements in diastolic function, an independent predictor of cardiovascular morbidity and mortality (AlJaoundi *et al.* 2012).

In addition, a chronic study of 12 weeks with a total of twenty-eight physically inactive participants investigated the effects of HIIT on cardiac structure and function in patients with

type 2 diabetes (Cassidy *et al.* 2015). The participants were randomised into either a HIIT (n=14) or control group (n=14). It was reported that left ventricular mass was significantly improved (HIIT: 104±17 g to 116±20 g vs Con: 107±25 g to 105±25 g, p<0.05) and systolic function through stroke volume was significantly improved (HIIT: 76±16 ml to 87±19 ml vs Con: 79±14 ml to 75±15 ml, p<0.01) following the HIIT programme. It was also reported that in the HIIT group early diastolic filling rates significantly increased (HIIT: 241±84 ml/s to 299±89 ml/s vs Con: 250±44 ml/s to 251±47 ml/s, p<0.05) and peak torsion significantly decreased (HIIT: 8.1±1.8° to 6.9±1.6° vs Con: 7.1±2.2° to 7.6±1.9°, p<0.05). The increase in early diastolic filling demonstrates improve diastolic function, suggesting that the myocardium has become more compliant and quicker to relax following HIIT. This is clinically significant as diastolic dysfunction is an independent predictor of cardiovascular morbidity and mortality (AlJaoundi *et al.* 2012).

A study by Molmen-Hansen *et al.* (2012) investigated the effects of moderate aerobic training and HIIT on cardiac function and blood pressure in patients with hypertension. The participants were randomised into three groups, either the HIIT group (n=31), aerobic training group (n=28) or the control group (n=29). The results show that HIIT was superior to aerobic training in terms of improved cardiac function, aerobic capacity and reducing mean heart rate. It was reported that only the HIIT group had an improvement in left ventricular ejection fraction, stroke volume, systolic flow velocity, end-diastolic volume (11%, p < 0.01), and early diastolic mitral annulus tissue velocity, E' (14%, p < 0.001). It was also found that systolic mitral annulus tissue velocity, S' increased by 15% (p < 0.001) after HIIT and 8% (p < 0.04) after aerobic training. The isovolumetric relaxation rate decreased significantly in the HIIT group only, by 16% (p < 0.01). However, it could be argued that despite positive results, the long duration on the HIIT sessions (38 mins) may be too long and participants may not adhere to sessions of this duration in the long term.

The results from this study coincide with Weston, Wisloff & Coombes (2014) meta-analysis who found that there was a greater improvement in heart rate, systolic and diastolic function in patients with hypertension following HIIT when compared to aerobic training. However, it can be noted that the results differ in terms of changes in myocardial structure, therefore it can be suggested that more research is needed to further understand the relationship between HIIT and hypertension and to clarify the physiological adaptations that take place.

Furthermore, a 12-week study including twenty-seven chronic heart failure patients (Wisloff *et al.* 2007), investigated the effects of HIIT compared against traditional aerobic training and a control group on cardiac structure and function. The study demonstrated significant improvements in cardiac, vascular and autonomic function after adherence to a long-term HIIT programme compared to aerobic training or a control group. There was a significantly greater increase in  $VO_{2max}$  following HIIT compared to aerobic training (46% compared to 14%,  $P<0.001$ ) which was associated with reverse left ventricular remodelling. The HIIT group was more effective in improving systolic function, with left ventricular ejection fraction significantly improving by 35% ( $P<0.01$ ), accompanied by increases in systolic mitral annulus excursion and stroke volume by 30% and 17% ( $P<0.01$ ) respectively. In addition, peak systolic mitral annulus velocity, an indicator of global contractility increased by 22% ( $P<0.01$ ), whereas there were no significant changes in systolic function in the aerobic or control groups. It was also shown that HIIT was more effective in improving diastolic function, with HIIT but not aerobic training significantly improving E/E' and E/A ratio by 49% and 15% ( $P<0.01$ ,  $P<0.05$ ) respectively. Isovolumetric relaxation time significantly decreased by 22% ( $P<0.05$ ) only in the HIIT group. HIIT and aerobic training reduced E/E' by 26% ( $P<0.001$ ) and 15% ( $P<0.043$ ) respectively. The results from this study give insight into the benefits of prescribing HIIT as a rehabilitative intervention in stable chronic heart failure patients.

The literature reviewed demonstrates how HIIT programmes can induce physiological adaptations that are beneficial to cardiovascular health in different populations. Empirical literature shows how acute and chronic sessions of HIIT can alter cardiac structure and function. However there has been no research to examine the effects of a short-term HIIT intervention over a 4-week period on cardiac structure and function in a young, physically inactive population.

### 1.9: Rationale

It is well recognised that taking part in a HIIT programme offers cardiovascular protective adaptations that can reduce risk factors of CVD, like that of traditional aerobic training programmes, but with less time commitment. However, literature supporting HIIT and the effect on cardiac structure and function in physically inactive populations is limited and can be considered equivocal in regard to the amount, mode, frequency and intensity of what is the best intervention for improvements. The reported benefits in cardiac structure and function can be seen in hypertensive patients, physically inactive older men, patients with type 2

diabetes, patients with chronic heart failure as well as patients with other cardio-metabolic chronic diseases. Current research supports HIIT as an effective intervention which can improve traditional and novel risk factors for CVD in healthy and high-risk populations. Therefore, the aim of this study is to investigate the effects upon cardiac structure and function in a physically inactive population following a 4-week HIIT intervention.

### 1.10: Hypothesis

Considering empirical research, the following hypothesis can be theorised;

Experimental hypothesis ( $H_a$ ) - There will be a statistically significant difference in cardiac structure and function measured via a transthoracic echocardiogram in participants completing a HIIT intervention compared to a control group.

Null hypothesis ( $H_0$ ) - There will not be a statistically significant difference in cardiac structure and function measured via a transthoracic echocardiogram in participants completing a HIIT intervention compared to a control group.

## 2.0: Method

### 2.1: Ethical approval and study population

All procedures for the current investigation conformed to Canterbury Christ Church Universities Research Governance Handbook, and the Canterbury Christ Church Universities Faculty of Social and Applied Sciences Research Ethics Committee approved the study. Signed informed written consent and a completed physical activity readiness questionnaire was obtained from all participants.

Forty-five participants including a mix of male and females who were physically inactive from Canterbury Christ Church University volunteered to participate in the study. The participant's demographics (see table 2.1), including age (Control =  $22 \pm 3.5$  years, HIIT =  $21 \pm 1.7$  years) and height (Control =  $172.4 \pm 8.8$  cm, HIIT =  $173.7 \pm 9.5$  cm) were recorded prior to each phase of the study. Height was measured using a stadiometer (Seca model 220, Seca GmbH & co.kg, Hamburg, Germany) and weight was measured using balance scales (Seca Model 710, Seca GmbH & co.kg, Hamburg, Germany).

**Table 2.1:** Participants demographic information pre-intervention.

	Control (n=20)	HIIT (n=21)
	Mean $\pm$ SD	Mean $\pm$ SD
	Pre	Pre
Weight (kg)	74.3 $\pm$ 15.9	73.9 $\pm$ 14.4
BMI (kg.m <sup>2</sup> )	24.9 $\pm$ 4.5	23.4 $\pm$ 3.2
BSA (m <sup>2</sup> )	1.87 $\pm$ 0.22	1.84 $\pm$ 0.22
Resting sBP (mmHg)	120.9 $\pm$ 9.6	121.2 $\pm$ 10.3
Resting mBP (mmHg)	88.6 $\pm$ 7.6	87.8 $\pm$ 8.4
Resting dBP (mmHg)	69.9 $\pm$ 7.4	69.5 $\pm$ 10.8
Resting PP (mmHg)	51.2 $\pm$ 8.6	51.7 $\pm$ 12.3

Although forty-five participants were recruited for the study, it must be documented that due to undisclosed reasons only forty-one participants completed the investigation.

## 2.2: Apparatus

All cardiac structural and functional parameters were measured by Quantitative 2-D transthoracic echocardiography, a method which enables characterization of left ventricular remodelling in normal subjects and in a variety of heart diseases (Lang *et al.* 2006). Transthoracic echocardiography was performed using a commercially available, portable ultrasound system (Vivid-q, GE Healthcare, Milwaukee, Wisconsin) with a 1.5–3.6 MHz phased array transducer (M4S-RS Matrix cardiac ultrasound probe), pre-and post the 4-week intervention. All image acquisitions and measurements were performed as recommended by the American Society of Echocardiography (Lang *et al.* 2015). Three consecutive cardiac cycles were recorded and stored for offline analysis using commercial software on a proprietary workstation (EchoPAC; V.113.0.x, GE Healthcare), with the results averaged. Images were obtained in parasternal long axis and short axis level to mitral valve and apex, and apical 2-, 3-, and 4-chamber views at baseline following 15 min of supine rest. Left ventricular mass was calculated according to Devereux *et al.* (1986). Left ventricular ejection fraction was determined by the modified biplane Simpson’s rule. Pulsed wave Doppler was

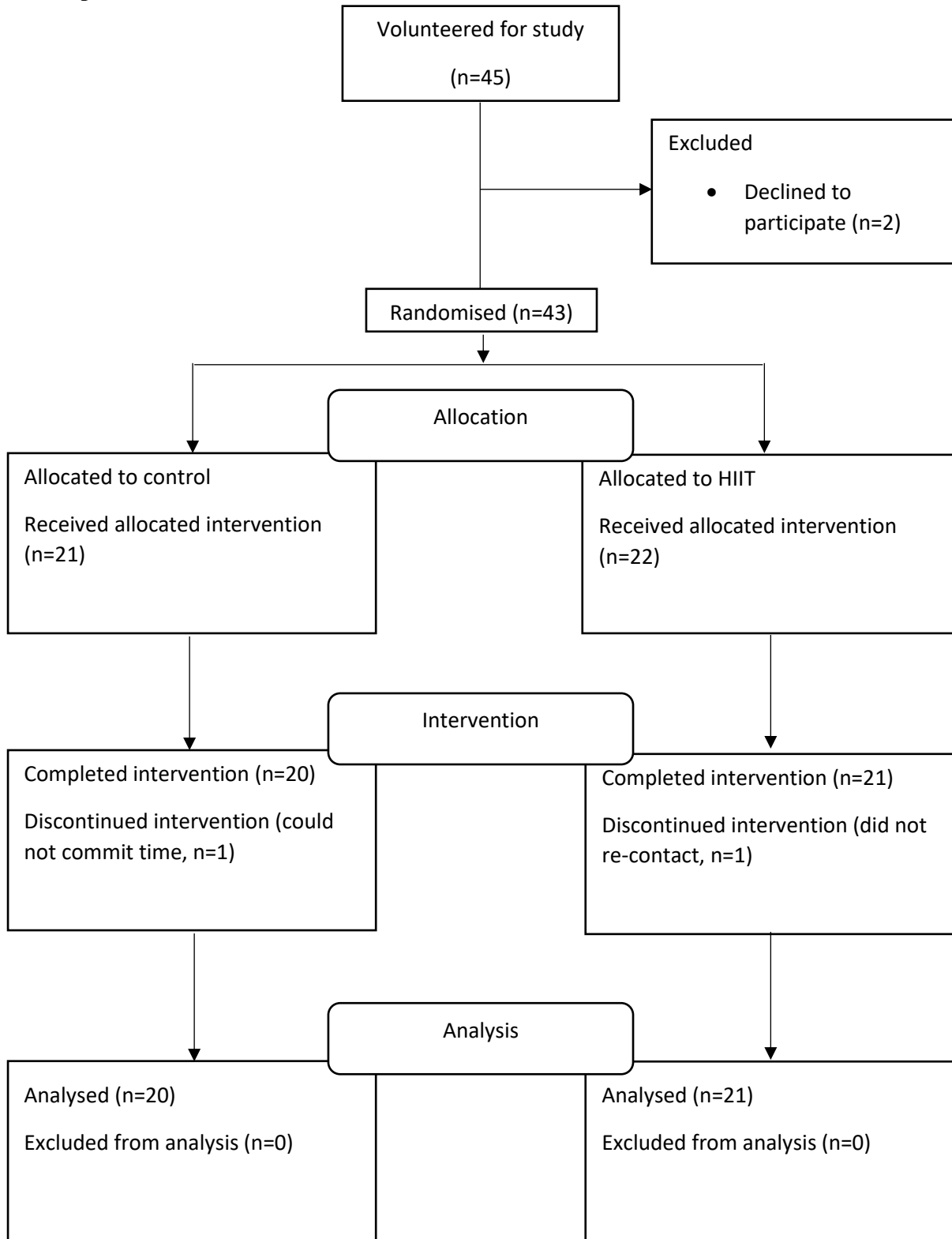
used to record transmitral flow in the apical four chamber view. Tissue Doppler velocities were acquired at the lateral mitral annulus. LV filling pressure was estimated from the mitral E/E' ratios (Ommen *et al.* 2000). Doppler-echocardiography has emerged as important clinical tool providing reliable and useful data on cardiac performance (Mandinov *et al.* 2000).

Resting blood pressure was measured using a Dinamap blood pressure monitor (Dinamap, PRO 200, GE Medical Systems Information Technologies GmbH, Munzinger Strasse 3, 79111, Freiburg, Germany) to confirm blood pressure status. The Dinamap PRO 200 has been shown to be a valid tool for measuring resting blood pressure and is approved by the American National Standards Institute (Lai *et al.* 2013).

A Wattbike cycle ergometer (Wattbike Ltd, Nottingham, UK) programmed using Wattbike expert software (V2.50.42, Wattbike Ltd, Nottingham, UK) was used for a Wingate test protocol in the HIIT intervention. It has been reported that the measurements produced from the Wattbike are valid and reproducible (Driller, Argus, & Shing, 2013). Hopker *et al.* (2010) demonstrated that the Wattbike is sufficiently accurate to track performance changes over time and thus would serve as an acceptable training tool for both trained and untrained populations. The Wingate protocol developed in the 1970s is documented as being the most common HIIT intervention used in studies (Shiraev & Barclay, 2012). The participant's Wattbike resistance during the 30 second maximal sprints were prepared to 7.5% of the participant's bodyweight.



### 2.3: Experimental Procedure



**Figure 2.1.** Flow diagram depicting the flow of participants at each stage of the study.

Prior to testing the participants were required to abstain from caffeine and alcohol for 24 hours. All participants were required to maintain their normal lifestyle and dietary patterns throughout the 4-week investigation. Prior to testing the participants were randomised, using stratified randomisation for gender into either the HIIT group or control group, to ensure an equal number of male and female participants in each condition, in addition to reducing any bias with pre-test variables (Blüher *et al.* 2017). The participants were then required to have 15 minutes seated rest while they had their seated resting BP and HR recorded. A reading was taken every 5 minutes in order to calculate an average. Following blood pressure assessment, A transthoracic echocardiogram was performed on each participant by using a portable ultrasound system (Vivid-q, GE Healthcare, Milwaukee, Wisconsin) with a 1.5–3.6 MHz phased array transducer (M4S-RS Matrix cardiac ultrasound probe) to measure cardiac structural and functional parameters. The same sonographer acquired all images, with the participant examined in the left lateral decubitus position. This was performed pre-and post HIIT and Control phases. Upon completion of the 4- week intervention participants were asked to come into the lab 48 hours after the last HIIT session to monitor any potential changes. The rationale behind participants coming in 48 hours prior to the last HIIT session is to ensure that sufficient time had been left for any post exercise hypotension to subside (Forjaz *et al.* 2000).

### 2.3.1. HIIT Group

The HIIT intervention consisted of supervised sessions 3 times a week for 4 weeks. Each HIIT session consisted of a 5-minute warm up, followed by 3x 30 second maximal sprints at a resistance of 7.5% body weight separated by a 2-minute active recovery period, similar to the HIIT protocol reported by Shiraev & Barclay (2012), to improve cardiovascular and metabolic health. Each session lasted approximately 12 minutes. HIIT sessions were performed in groups with verbal encouragement given throughout to maximise beneficial effects from the intervention (Burke *et al.* 2006). Upon completion of the 4-week intervention the participants underwent the same procedure as pre-testing, 48 hours after the final HIIT session, in order to assess the influence HIIT had upon cardiac variables.

### 2.3.2. Control Group

The participants were instructed to maintain their lifestyle and dietary habits for a 4-week period. Once completed the participants underwent the same procedure as pre-testing to assess any influence upon cardiac structural and functional variables.

## 2.4: Power Calculation

Based on operator coefficient of variation for diastolic function and estimated filling pressure (primary outcome variables) using transthoracic echocardiography, a sample size of 14 to 17 participants in each group has 80% power to detect a significant difference in diastolic function and estimated filling pressure, respectively, with a 2-sided  $p < 0.05$ . It was estimated a drop-out rate of between 10-30% leading to an overall sample size of 44 participants (22 in each group).

## 2.5: Data Analysis

All data was analysed using statistical package for social sciences (SPSS V22.0, release version for Windows; SPSS Inc., Chicago IL, USA). Unless specified otherwise, continuous variables are presented as mean  $\pm$  SD. Change in cardiac parameters in control and HIIT groups were analysed using an analysis of covariance (ANCOVA), as the data was normally distributed. Statistically significant data was report as  $P < 0.05$ .

## 3.0: Results

Forty-five participants were recruited for the study. Forty-one participants completed the intervention, 21 in the HIIT group and 20 in the control group. Two participants declined to participate before being allocated to a group, due to lack of time. One participate removed themselves from the control group due to an inability to complete post testing. One participant removed themselves from the HIIT intervention due to unknown reasons. There were no adverse effects following the HIIT sessions. There was no significant change in the participants pre and post demographic data between groups following the intervention (see table 3.1).

**Table 3.1:** Participants demographic data pre and post intervention.

Control (n=20)	HIIT (n=20)
----------------	-------------

	Mean $\pm$ SD		Mean $\pm$ SD	
	Pre	Post	Pre	Post
Weight (kg)	74.3 $\pm$ 15.9	74.2 $\pm$ 15.7	73.9 $\pm$ 14.4	74.3 $\pm$ 15
BMI (kg.m <sup>2</sup> )	24.9 $\pm$ 4.5	24.8 $\pm$ 4.4	23.4 $\pm$ 3.2	23.5 $\pm$ 3.4
BSA (m <sup>2</sup> )	1.87 $\pm$ 0.22	1.87 $\pm$ 0.23	1.84 $\pm$ 0.22	1.84 $\pm$ 0.23
Resting sBP (mmHg)	120.9 $\pm$ 9.6	119.7 $\pm$ 10.9	121.2 $\pm$ 10.3	114.6 $\pm$ 8.8*
Resting mBP (mmHg)	88.6 $\pm$ 7.6	88.8 $\pm$ 9.3	87.8 $\pm$ 8.4	85 $\pm$ 6.3
Resting dBP (mmHg)	69.9 $\pm$ 7.4	69.9 $\pm$ 8.8	69.5 $\pm$ 10.8	66.1 $\pm$ 5.9
Resting PP (mmHg)	51.2 $\pm$ 8.6	49.7 $\pm$ 7.9	51.7 $\pm$ 12.3	48.5 $\pm$ 8.34

Values are presented as mean  $\pm$  SD. sBP, systolic blood pressure; dBP, diastolic blood pressure; mBP, mean blood pressure; PP, pulse pressure. \* indicates significant ( $P < 0.05$ ) difference in the pre- to post-change value between control and HIIT intervention group.

### 3.1: Haemodynamic Parameters

Following 4 weeks of HIIT there was a significant reduction in resting SBP ( $-6.86 \pm 8.76$  mmHg) compared against the control group ( $-1.15 \pm 9.4$  mmHg,  $P = 0.041$ ). There were no significant differences found in resting DBP or MBP in either the HIIT group or control group (see table 3.1). As shown in figure 3.1A, there was a significant reduction in resting heart rate ( $65.59 \pm 10.15$  to  $63.05 \pm 13.42$   $\text{b} \cdot \text{min}^{-1}$ ) in the HIIT intervention and no significant change ( $60.7 \pm 8.19$  to  $61.3 \pm 7.32$   $\text{b} \cdot \text{min}^{-1}$ ;  $P=0.013$ ) during the control period. As shown in figure 3.1B, there was a significant increase in SV ( $55.48 \pm 16.27$  to  $64.24 \pm 20.62$  ml) in the HIIT intervention and no significant change ( $56.8 \pm 11.94$  to  $59.4 \pm 14.81$  ml;  $P=0.015$ ) during the control period. As illustrated in figure 3.1C, there was no significant change in either group in cardiac output.

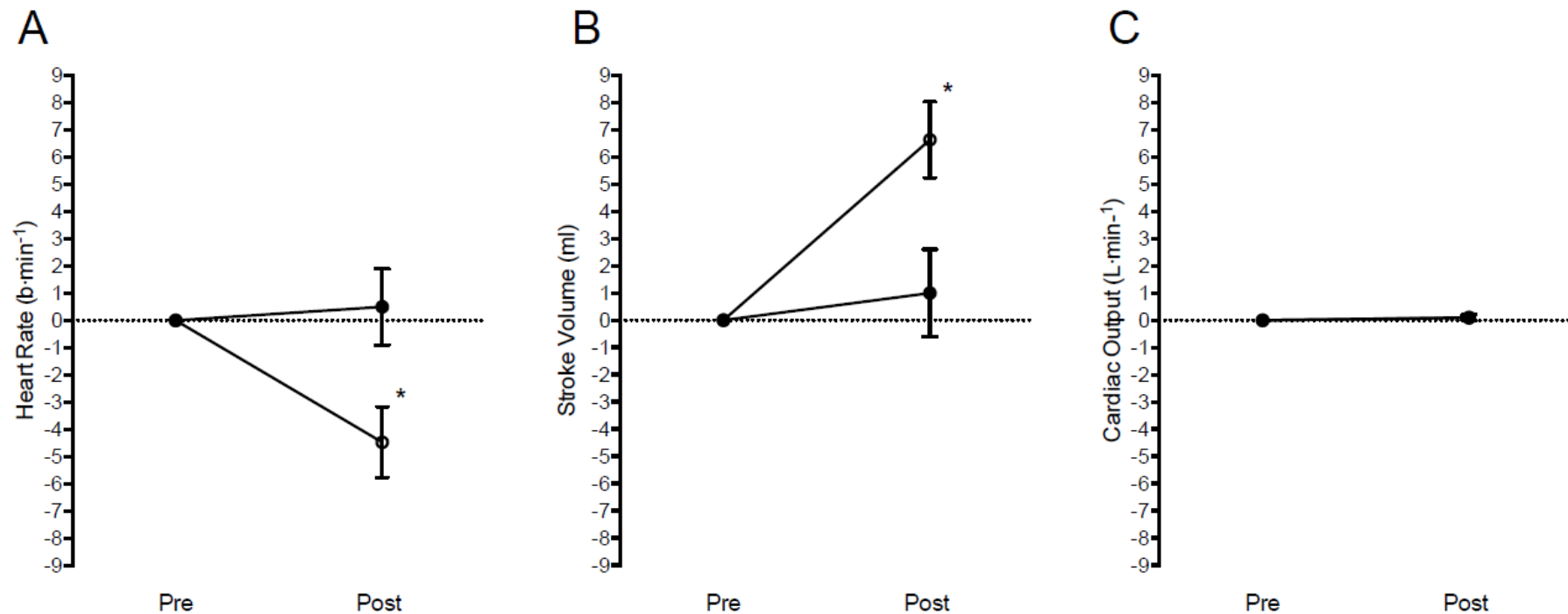


Figure. 3.1. Mean heart rate (A), stroke volume (B), cardiac output (C) change values at rest for the control (filled circles) and HIIT (open circles) conditions. *Error bars* indicate standard error of the mean. \* Significant ( $P < 0.05$ ) difference in the control and HIIT change value.

### 3.2: Cardiac Structural Parameters

As displayed in table 3.2 there was no significant change in either group in cardiac structural parameters.

Table 3.2 displays changes in cardiac structural parameters following HIIT and control period

Parameter	Control		HIIT	
	Pre <sup>b</sup>	Post	Pre <sup>b</sup>	Post
<b>IVSd (cm)</b>	0.7 ± 0.1	0.6 ± 0.1	0.71 ± 0.14	0.68 ± 0.12
<b>LVIDd (cm)</b>	4.6 ± 0.42	4.6 ± 0.39	4.63 ± 0.42	4.64 ± 0.46
<b>LVPWd (cm)</b>	0.8 ± 0.11	0.8 ± 0.11	0.86 ± 0.16	0.82 ± 0.14
<b>LVIDs (cm)</b>	3.7 ± 0.4	3.7 ± 0.36	3.47 ± 0.36	3.52 ± 0.38
<b>FS (%)</b>	20.4 ± 7.81	19.7 ± 5.65	24.76 ± 7.12	23.79 ± 7.47
<b>LA (cm)</b>	3 ± 0.22	3 ± 0.27	3.07 ± 0.36	3.05 ± 0.38
<b>LVLd (cm)</b>	8 ± 0.71	8.1 ± 0.71	8.06 ± 0.66	8.16 ± 0.73
<b>LVLS (cm)</b>	6.5 ± 0.58	6.3 ± 1.02	6.45 ± 0.62	6.43 ± 0.64
<b>LVEF (%)</b>	50.1 ± 5.61	48.3 ± 5.88	49.61 ± 6.01	49.18 ± 6.05
<b>LVM (g)</b>	110.88 ± 29.62	106.21 ± 26.45	119 ± 37.27	112.4 ± 29.6
<b>RWT (cm)</b>	0.35 ± 0.04	0.35 ± 0.05	0.37 ± 0.07	0.35 ± 0.06

Note: *IVSd*, interventricular septum thickness at diastole; *LVIDd*, Left Ventricular Internal Dimension -Diastole; *LVPWd*, *Left Ventricular Posterior Wall Dimensions*; *LVIDs*, Left Ventricular Internal Dimension - Systole; *FS*, Fractional Shortening; *LA*, Left Atrium; *LVLd*, Left Ventricle Length Diastole; *LVLS*, Left Ventricle Length Systole; *LVEF*, Left ventricular ejection fraction; *LVM*, Left Ventricular Mass; *RWT*, *Relative wall thickness*. Values are presented as mean ± standard deviation. <sup>b</sup> Adjusted for baseline value for ANCOVA. \* Indicates significant (P < 0.05) difference in the pre- to post-delta value between control and HIIT intervention.

### 3.3: Cardiac Function Parameters

As illustrated in table 3.3, it can be noted that there was a significant increase in LVEDV ( $115.59 \pm 28.34$  to  $131.94 \pm 33.40$ ml) in the HIIT intervention and no significant change ( $117.1 \pm 27.93$  to  $121.4 \pm 24.5$ ;  $P=0.025$ ) during the control period. There was a significant reduction in E/A ratio ( $1.98 \pm 0.48$  to  $1.95 \pm 0.55$ ) in the HIIT intervention and no significant change ( $2.02 \pm 0.34$  to  $2.05 \pm 0.29$ ;  $P=0.027$ ). There was a significant reduction in lateral E/E' ratio ( $4.67 \pm 1.28$  to  $4.20 \pm 0.87$ ) in the HIIT intervention and no significant change ( $4.23 \pm 1.16$  to  $4.57 \pm 1.27$ ;  $P=0.04$ ) in the control group. There was a significant reduction in septal E/E' ratio ( $6.74 \pm 1.41$  to  $6.23 \pm 1.06$ ) in the HIIT intervention and no significant change ( $6.35 \pm 1.98$  to  $6.67 \pm 1.9$ ;  $P=0.01$ ) in the control group. There was a significant reduction in average E/E' ratio ( $5.41 \pm 1.17$  to  $5.22 \pm 0.89$ ) in the HIIT intervention and no significant change ( $5 \pm 1.83$  to  $5.37 \pm 1.38$ ;  $P=0.002$ ) in the control group.

**Table 3.3** displays changes in cardiac function parameters following HIIT and control period

Parameter	Control		HIIT	
	Pre <sup>b</sup>	Post	Pre <sup>b</sup>	Post
<b>LVEDV (ml)</b>	$117.1 \pm 27.93$	$121.4 \pm 24.5$	$115.59 \pm 28.34$	$131.94 \pm 33.40^*$
<b>LVESV (ml)</b>	$62.6 \pm 17.71$	$63.7 \pm 17.23$	$56.21 \pm 14.94$	$66.64 \pm 16.29$
<b>MV E Vel(m/s)</b>	$0.79 \pm 0.17$	$0.82 \pm 0.17$	$0.79 \pm 0.15$	$0.8 \pm 0.13$
<b>MV DecT (m/s)</b>	$181.5 \pm 21.51$	$176.3 \pm 16.66$	$186.33 \pm 40.88$	$166.26 \pm 26.99$
<b>MV Dec Slope (m/s<sup>2</sup>)</b>	$4.5 \pm 1.08$	$4.6 \pm 0.99$	$4.57 \pm 1.37$	$4.99 \pm 1.06$
<b>MV A Vel (m/s)</b>	$0.48 \pm 0.11$	$0.4 \pm 0.08$	$0.41 \pm 0.06$	$0.44 \pm 0.11$
<b>MV E/A Ratio</b>	$2.02 \pm 0.34$	$2.05 \pm 0.29$	$1.98 \pm 0.48$	$1.95 \pm 0.55^*$
<b>E' Lateral (m/s)</b>	$0.18 \pm 0.03$	$0.18 \pm 0.03$	$0.19 \pm 0.04$	$0.19 \pm 0.03$
<b>E/E' Lateral</b>	$4.23 \pm 1.16$	$4.57 \pm 1.27$	$4.67 \pm 1.28$	$4.20 \pm 0.87^*$
<b>A' Lateral (m/s)</b>	$0.07 \pm 0.02$	$0.07 \pm 0.02$	$0.06 \pm 0.02$	$0.07 \pm 0.02$
<b>S' Lateral (m/s)</b>	$0.11 \pm 0.02$	$0.11 \pm 0.03$	$0.1 \pm 0.02$	$0.11 \pm 0.02$
<b>E' Septal (m/s)</b>	$0.13 \pm 0.02$	$0.13 \pm 0.02$	$0.13 \pm 0.02$	$0.13 \pm 0.02$
<b>E/E' Septal</b>	$6.35 \pm 1.98$	$6.67 \pm 1.9$	$6.74 \pm 1.41$	$6.23 \pm 1.06^*$
<b>Avg E/E'</b>	$5 \pm 1.83$	$5.37 \pm 1.38$	$5.41 \pm 1.17$	$5.22 \pm 0.89^*$
<b>A' Septal (m/s)</b>	$0.08 \pm 0.03$	$0.08 \pm 0.01$	$0.09 \pm 0.04$	$0.08 \pm 0.01$
<b>S' Septal (m/s)</b>	$0.09 \pm 0.02$	$0.08 \pm 0.01$	$0.1 \pm 0.01$	$0.09 \pm 0.01$
<b>RV E'(m/s)</b>	$0.14 \pm 0.03$	$0.14 \pm 0.02$	$0.14 \pm 0.02$	$0.15 \pm 0.03$
<b>RV A' (m/s)</b>	$0.1 \pm 0.03$	$0.09 \pm 0.03$	$0.1 \pm 0.02$	$0.1 \pm 0.02$
<b>RV S' (m/s)</b>	$0.13 \pm 0.02$	$0.13 \pm 0.02$	$0.14 \pm 0.02$	$0.16 \pm 0.11$
<b>TAPSE (cm)</b>	$1.94 \pm 0.18$	$1.95 \pm 0.21$	$2.02 \pm 0.21$	$2.06 \pm 0.18$

Note: *LVDEV*, left ventricular end-diastolic volume; *LVESV*, left ventricular end-systolic volume; *LVEF*, *E*, peak mitral inflow velocity during early filling; *DecT*, deceleration time; *A*, peak mitral inflow during atrial systole; *E'*, peak annulus tissue velocity during early filling; *A'*, peak annulus tissue velocity during atrial systole; *S'*, systolic peak flow velocity in left ventricular outlet tract; *TAPSE*, Tricuspid annular plane systolic excursion. Values are presented as mean  $\pm$  standard deviation. <sup>b</sup> Adjusted for baseline value for ANCOVA. \* Indicates significant ( $P < 0.05$ ) difference in the pre- to post- delta value between control and HIIT intervention.



### 3.4: Cardiac Time Intervals

As illustrated in figure 3.2, it can be noted that there was a significant reduction in isovolumetric relaxation time ( $81.23 \pm 12.85$  to  $77.83 \pm 9.81$  m/s) in the HIIT intervention and no significant change ( $83.45 \pm 10.36$  to  $85.71 \pm 8.24$  m/s;  $P=0.022$ ) in the control group. It can also be noted that there was no significant change in either group in isovolumetric contraction and ejection time.

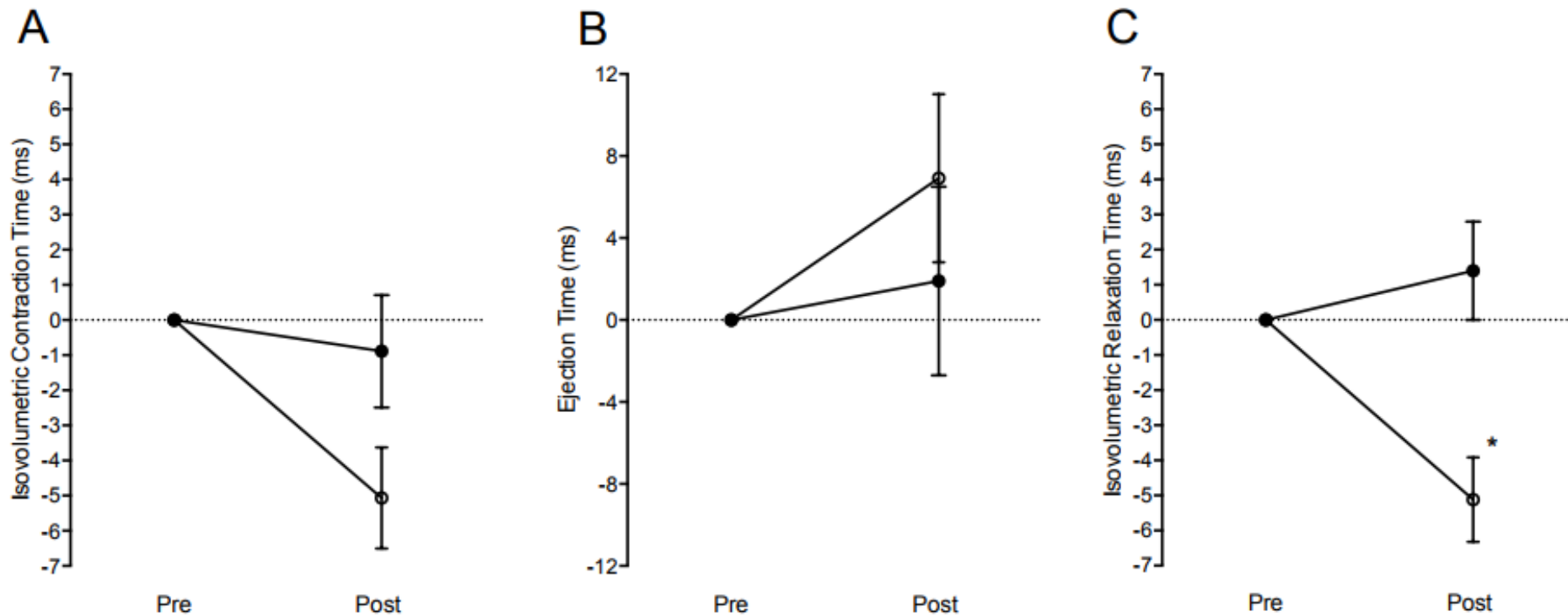


Figure. 3.2. Isovolumetric contraction (A), ejection time (B), isovolumetric relaxation (C) change values at rest for the control (filled circles) and HIIT (open circles) conditions. *Error bars* indicate standard error of the mean. \* Significant ( $P<0.05$ ) difference in the control and HIIT change value.

## 4.0: Discussion

Empirical literature indicates that participation in regular physical activity can reduce the risk of chronic diseases related to unhealthy lifestyles. Findings from the present study offer new and consistent research which demonstrate the response of HIIT on health markers in a physically inactive population. These findings offer insight of the role of HIIT and the potential it could have on primary health care and physical activity guidelines.

### 4.1: HIIT and Myocardial Compliance

Subsequent to the 4-week HIIT intervention, it can be noted that resting heart rate was significantly reduced by  $-4.47 \pm 5.68 \text{ b}\cdot\text{min}^{-1}$  ( $P=0.013$ ). It can also be observed that SV ( $6.56 \pm 8.04 \text{ ml}$ ;  $P=0.015$ ) and LVEDV ( $16.35 \pm 20.44 \text{ ml}$ ;  $P=0.025$ ) significantly increased. These findings indicate that myocardial compliance can be improved following a short term HIIT intervention compared against a control group, which could be beneficial to individuals who cite lack of time as their main barrier to regular exercise.

Findings from the present study coincide with those by Molmen-Hansen *et al.* (2012) as they reported improvements in resting heart rate, stroke volume and end diastolic volume following a 12-week HIIT intervention. Molmen-Hansen's study used a similar HIIT protocol to the present study and compared it to an aerobic training group, in individuals with hypertension. Molmen-Hansen *et al.* (2012) reported reductions of  $3.8 \text{ b}\cdot\text{min}^{-1}$  following the HIIT intervention, as well as increases of 8ml in SV and 12ml in LVEDV, opposed to no significant changes in the aerobic group, further reinforcing the benefits of HIIT. Heydari, Boutcher & Boutcher's (2013) investigation also found reductions in resting heart rate of  $6.2 \text{ b}\cdot\text{min}^{-1}$  following a 12-week HIIT intervention. In comparison to these findings it could be theorised that if the present study was longer, further improvements in myocardial compliance could be observed. It can also be noted that the participants in the present study had greater improvements compared to Molmen-Hansen in a shorter time-period. The present study had shorter work periods and shorter recovery periods which may have allowed the participants to perform at a higher intensity compared to the participants in Molmen-Hansen's study. This would suggest that the exercise protocol in the present study permits a longer duration of the training period to be spent at a higher percentage of  $\text{VO}_{2\text{max}}$ . Which could possibly explain the greater adaptations in the present study.

Empirical literature frequently acknowledges the improvements in myocardial compliance following HIIT interventions, however, the mechanisms underlying these improvements are complex and are yet to be completely understood. However, it has been suggested that the underlying mechanisms that potentially could explain improvements in myocardial compliance following HIIT interventions are similar to those of aerobic exercise, findings that have been reported in many longitudinal studies surrounding HIIT and aerobic exercise training (Lavie *et al.* 2015).

A possible mechanism explaining a reduction in resting HR following HIIT, which coincides with the result of the present study is the increase in SV. It has been reported that increased LVEDV is associated with increased ventricular preload. Higher LVEDV has previously been found to be a consequence of increased venous return, which stretches the sarcomeres, thereby increasing their preload. Changes in ventricular preload have been shown to dramatically effect stroke volume due to the Frank-Starling mechanism. According to the Frank-Starling law, the increase in blood volume causes a direct increase in myocardial contractility and to maintain cardiac output, resting HR can decrease as a response to the higher SV. This response influences a reduction in myocardial workload, which has been reported to be beneficial in the prevention of CVD (Heydari, Boutcher & Boutcher, 2013).

Another possible mechanism explaining a reduction in resting HR following the HIIT intervention could be improvements in cardiac autonomic parameters. Research has shown that short-term HIIT intervention increases parasympathetic activity and decreases sympathetic activity to the heart at rest (Besnier *et al.* 2017). This has been shown to improve cardiovascular health by increasing stroke volume, heart rate variability whilst reducing resting HR, peripheral resistance and blood pressure parameters (Lanfranchi & Somers, 2002). An improvement in cardiac autonomic function would indicate a greater sympathovagal balance (Goldstein *et al.* 2011). This response would offer a cardio-protective effect as well as reducing the incidence of CVD (Heydari, Boutcher & Boutcher, 2013).

Alternatively, the reductions in resting HR could possibly be linked with a training-induced increase in vagal activity (Hautala, Kiviniemi & Tulppo, 2009). It has been reported that HIIT interventions can increase parasympathetic activity whilst also decreasing sympathetic activity over the sinus node autorhythmicity when at rest (McCorry, 2007). This improvement in sympathovagal balance after the interval exercise session, could represent a greater cardio protective effect (Borresen & Lambert, 2008). The research that explains the

possible mechanisms responsible for improving cardiac vagal modulation is limited, however, angiotensin II and nitric oxide are potential mediators (Routledge *et al.* 2010). Further research is required to clarify the role of nitric oxide and its potential influence on cardiac vagal tone.

The improvements in resting HR could also be attributed to exercise-induced sinus bradycardia (D'Souza *et al.* 2014). A case study by D'Souza *et al.* (2014) investigating the effects of exercise on sedentary mice found electrophysiological adaptations in the sinus node. The study observed training induced remodelling of pacemaker ion channels, most notable was the downregulation of HCN4, mRNA and protein, possibly due to a decrease in density of  $I_f$ . However, it was also noted that there was widespread remodelling of the sinus node and it is possible that other aspects of the remodelling may have had an impact on pacemaker mechanisms.

#### 4.2: Cardiac Function

HIIT improved diastolic function significantly when compared against the control group. The changes in tissue Doppler measurements were significant, while it can be noted the control group suffered further impairment. The positive effect of HIIT on myocardial function in other CVD has been well documented in previous literature (Cassidy *et al.* 2015; Molmen-Hansen *et al.* 2012).

The findings from the present study suggest that the improved SV with enhanced ventricular preload and recruitment of the Frank-Starling mechanism, are associated with enhanced diastolic filling indices. In the HIIT group, favourable trends were observed for improvements in E/E' ( $5.41 \pm 1.17$  to  $5.22 \pm 0.89$ ;  $P=0.002$ ) and E/A ratio ( $1.98 \pm 0.48$  to  $1.95 \pm 0.55$ ;  $P=0.027$ ). Even though these changes were modest, all participants had normal diastolic function. However, these findings may have important clinical implications in patients with borderline and established diastolic dysfunction, due to diastolic function being a strong independent predictor of all-cause mortality (Ha *et al.* 2004).

The significant reduction in E/A ratio suggests that the myocardium is more compliant and quicker to relax following HIIT. This enables greater filling and emptying of the ventricle, demonstrated from the increase in SV and LVEDV. Improved diastolic filling is also consistent with the decrease in the isovolumetric relaxation rate following the HIIT intervention (Thomas & Weyman, 1991). A reduced isovolumetric relaxation time might be

indicative of an enhanced atrioventricular pressure gradient and may be the precursor to the enhanced left ventricular early filling, observed by the improvement in E/A ratio (Lalande & Johnson, 2008). Diastolic dysfunction is a common finding of the hypertensive heart and an independent predictor of mortality (Redfield *et al.* 2003), thus emphasising the clinical relevance of these findings.

Further mechanisms explaining the improvements in diastolic function could be associated with factors effecting myocardial twist and deformation. Previous literature has identified reductions in cardiac torsion following a HIIT protocol (Cassidy *et al.* 2015). Research has identified that cardiac torsion describes the twisting motion of the myocardium during contraction and reflects the dominance of epicardial fibres over endocardial fibres, therefore, improvements in cardiac torsion suggest a reduction in endocardial damage following HIIT (Buckberg *et al.* 2008). It is plausible to suggest that improvements in myocardial torsion could be a mechanism for generating stored energy during systole, which is released during early diastole to produce ventricular recoil, upward annular motion and suction, enabling greater rapid filling of the ventricle (Tan *et al.* 2009).

E/E' ratio has been shown to be a non-invasive marker of left ventricular filling pressure at rest (Sato *et al.* 2017). The significant reduction in E/E' following the HIIT intervention suggests lower myocardial workload at rest. A possible mechanism explaining this adaptation is an improvement in exercise capacity. E/E' ratio has been shown to have a significant correlation with exercise capacity, namely  $VO_{2max}$  (Edelmann *et al.* 2011).

Existing research has identified significant improvements in  $VO_{2max}$  following a 2 week HIIT intervention (Astorino *et al.* 2012). This evidence could suggest significant cardiorespiratory adaptations following a short term HIIT intervention. It is therefore plausible to suggest that if  $VO_{2peak}$  had been measured in the present study, improvements alongside E/E' could have been discovered. An increase in peak aerobic capacity apparent by the significant reduction in E/E' ratio is associated with a lower risk of all-cause mortality and major cardiovascular events (Hillis *et al.* 2005). However, future research is needed to clarify these findings, as generalisation cannot be made in the present population.

Further mechanisms explaining the significant reduction in left ventricular filling pressure could be adaptations in the pulmonary, vascular or peripheral systems. Research suggests that a significant reduction in HR combined with improvements in blood pressure parameters, could indicate a significantly reduced myocardial oxygen demand (Fletcher *et al.* 2013). These

significant reductions could result in an anti-ischaemic effect which is beneficial to cardiovascular health (Fletcher *et al.* 2013).

Reductions in E/E' ratio because of improved blood pressure parameters would suggest improvements in endothelial function and sympathetic tone. Previous research has shown HIIT to be superior to traditional aerobic training programmes for improving flow mediated dilation (Ramos *et al.* 2015). It has been suggested that the sheer stress experienced during HIIT, increases the stimuli for increasing NO availability in the endothelium. As a consequence of improved flow mediated dilation, there would be greater perfusion and oxygen supply to peripheral tissue. This vasodilation because of enhanced endothelial function would indicate a reduction in systemic vascular resistance, this could potentially explain the reduction in left ventricular filling pressures and improvement in diastolic function.

Research indicates that adherence to an aerobic or HIIT program can lead to physiological adaptations in the vasculature and trigger anti-atherosclerotic adaptations (Green, 2009). A case study investigating the effect an exercise intervention had on the internal mammary artery (Hambrecht *et al.* 2003) reported an improvement in acetylcholine and adenosine-mediated blood flow, indicating enhanced function of both the conduit and resistance artery endothelium-dependant vasodilator. It was also found that there was an increase in endothelial nitric oxide synthase and shear stress-related endothelial nitric oxide synthase phosphorylation. This infers that a shear stress-dependant mechanism may result in increased nitric oxide bioactivity as a result of exercise training (Green, 2009). These findings coincide with that of Fletcher *et al.* (2013) who found that adherence to an exercise programme increases arterial wall stress, which over a prolonged period can increase dilation capacity and lumen size. This could result in enhanced myocardial compliance as a result of reduced total peripheral resistance as well as contribute to the blood pressure reductions reported.

The management and control of blood pressure is crucial for improving public health. Hypertension, is the most predominant pre-cursor of cardiovascular disease and deaths globally (He & Whelton, 1997). Reductions in blood pressure lead to reduced myocardial workload and decrease the risk of major cardiovascular events. However, it can be noted that the mechanisms responsible remain unclear. It has been suggested that improvements in endothelial function, reductions in plasma renin activity and lower plasma noradrenaline are possible explanations to improvements observed at rest following exercise interventions. Further research is needed

to help understand the physiological adaptations on haemodynamic parameters following HIIT interventions.

Following the 4-week HIIT intervention, it can be noted that isovolumetric relaxation time was significantly reduced ( $81.23 \pm 12.85$  to  $77.83 \pm 9.81$  m/s;  $P=0.022$ ), compared to no significant change in the control group. Myocardial time intervals are sensitive markers of cardiac dysfunction and can identify miniscule cardiac impairments which are unrecognised by conventional echocardiography (Biering-Sørensen *et al.* 2016). Improvements in isovolumetric relaxation time indicates improved myocardial performance, as a measure of active ventricular relaxation, which further supports the notion that HIIT is beneficial to diastolic function. A reduction in isovolumetric relaxation time is associated with a lower risk of all-cause mortality and major cardiovascular events (Biering-Sørensen *et al.* 2015).

Following the HIIT intervention, adaptations at the cellular level could potentially explain reductions in isovolumetric relaxation time. Increased  $Ca^{2+}$  uptake into the sarcoplasmic reticulum results in faster relaxation rates in the myocardial cells due to improved diastolic  $Ca^{2+}$  handling in trained cardiomyocytes (Kemi *et al.* 2005; Kemi *et al.* 2008). This could potentially be recognised as an adaptation following the HIIT intervention due to the longer periods of diastole resulting in increased preload which due to the Frank-Starling mechanism increases SV, which has been shown to influence greater cardiovascular protective adaptations (Shephard & Balady, 1999).

Relative to current physical activity guidelines, the findings observed from the present study found significant improvements in resting HR, SV and diastolic function can be accomplished when completing exercise training of a shorter duration, which have been previously associated with reduced CVD risk. The 4-week HIIT intervention was a time efficient strategy to induce myocardial functional adaptations in a group exercise setting compared to a control group. This study provides evidence that individuals who cite lack of time and motivation could benefit from a training programme similar to the present study. In relation to health, the clinical importance of these findings is significant as HR (Aune *et al.* 2017) and diastolic function (Sato *et al.* 2017) are independent predictors of CVD and as little as 4 weeks of HIIT observed in this study produce significant improvements in these markers.

The findings from the present study highlight the possibility for short-term HIIT programmes as effective strategies for improving health. However, as the present study was only a short term HIIT intervention and had 4 drop outs, it is unknown whether adherence to long-term

HIIT interventions is sustainable. However, previous research has found that drop-out rates in a HIIT programme tend to be lower compared to traditional aerobic training programmes (Heydari, Boutcher & Boutcher, 2013). The findings from the present study demonstrate important clinical evidence in regards to HIIT frequency (3 days per week), low volume per session (3 x 30 seconds), low active recovery (2 minutes) and short-term duration (4-weeks) in a young population with pre-hypertension. It can be concluded that the significant improvements found from the present study identify a need for the current physical activity guidelines to adapt to allow for a potentially greater exercise adoption and adherence from the wider population.

#### 4.3: Limitations

This study is not without limitation. In regards to the study population, it could be suggested that stress and anxiety from the student lifestyle and university assessments may have had an influence on a variety of variables measured throughout. In addition, there were no dietary recommendations, measurements of alcohol consumption or measurements of physical activity outside of testing throughout the duration of the study which could possibly affect the results. Participants were instructed to abstain from any structured exercise outside of the study and to maintain their normal daily living, however, this was not measure or recorded just confirmed verbally.

Previous research investigating HIIT and cardiac structure and function in a young, physically inactive population is limited and can be considered equivocal, making the results difficult to generalise to a larger population. In the present study HIIT produced significant changes in myocardial compliance and diastolic function. Therefore, future research in young, physically inactive populations should consider utilising this protocol in order to make comparisons and decisions on its clinical effect.

It is also possible that due to the HIIT being performed in a group environment, this may have influenced the engagement, enjoyment, improved adherence and maximal effort produced from the participants within the study. HIIT performed in isolation may have affected adherence and training intensity, which may affect physiological adaptations.

Due to the control group receiving no treatment it may be suggested that there is a potential for placebo effects to take place. Future research may benefit from developing strategies to mitigate its impact on research findings and clinical practice.



The mechanisms responsible for the changes observed following the HIIT intervention are complex and likely multifaceted. It is possible that the use of blood tests to measure blood plasma volume and other important biomarkers could be used to ascertain potential mechanisms supporting physiological adaptation. The use of  $VO_{2peak}$  testing could have also been useful for measuring cardiorespiratory adaptations. The use of blood tests was unavailable for the present study due to lack of training and  $VO_{2peak}$  was not measured due to lack of research time. In addition, methods used to assess vascular function may have supported the observed improvements in myocardial function.

#### 4.4: Conclusion

The findings of the present study demonstrate that a 4-week HIIT programme can significantly improve diastolic function and reduce resting blood pressure when compared against a control group. These findings support HIIT as a time-efficient strategy to induce significant adaptations in cardiovascular health. Therefore, the null hypothesis is rejected. Continued engagement in regular physical activity is required to maintain and/or produce chronic adaptations from exercise, as well as limiting cardiovascular risk factors and all cause mortality. As such, future research is required to ascertain the long-term physiological responses and adaptations to HIIT compared to alternative exercise training interventions. Longer-term HIIT interventions may provide evidence to support this method of exercise training in future guidelines for the prevention of numerous chronic diseases.

## 5.0: References

Albouaini, K., Egred, M., Alahmar, A. & Wright, D.J. (2007). 'Cardiopulmonary exercise testing and its application'. *Heart*, 93(10), pp. 1285-1292.

AlJaroudi, W., Alraies, M, C., Halley, C., Rodriguez, L., Grimm, R, A., Thomas, J, D. & Jaber, W, A. (2012). 'Impact of Progression of Diastolic Dysfunction on Mortality in Patients with Normal Ejection Fraction Clinical Perspective', *Circulation*, 125(6), pp.782-788.

Allender, S., Foster, C., Scarborough, P. & Rayner, M. (2007). 'The burden of physical activity-related ill health in the UK'. *Journal of Epidemiology and Community Health*, 61(4), pp. 344-348.

Andrea, A., Caso, P., Severino, S., Galderisi, M., Sarubbi, B., Limongelli, G., Cice, G., Andrea, L., Scherillo, M., Mininni, N. & Calabrò, R. (2002). 'Effects of different training protocols on left ventricular myocardial function in competitive athletes: a Doppler tissue imaging study'. *Italian Heart Journal*, 3, pp.34-40.

Arena, R., Myers, J., Forman, D, E., Lavie, C, J. & Guazzi, M. (2013). 'Should high-intensity- aerobic interval training become the clinical standard in heart failure?', *Heart Failure Reviews*, 18(1), pp.95-105.

Astorino, T, A., Allen, R, P., Roberson, D, W. & Jurancich, M. (2012). 'Effect of high intensity interval training on cardiovascular function, VO<sub>2</sub>max, and muscular force', *The Journal of Strength & Conditioning Research*, 1, pp. 138-145.

Aune, D., Sen, A., óHartaigh, B., Janszky, I., Romundstad, P, R., Tonstad, S. & Vatten, L, J. (2017). 'Resting heart rate and the risk of cardiovascular disease, total cancer, and all-cause mortality—A systematic review and dose–response meta-analysis of prospective studies'. *Nutrition, Metabolism and Cardiovascular Diseases*, 27(6), pp. 504-517.

Baggish, A, L., Wang, F., Weiner, R, B., Elinoff, J, M., Tournoux, F., Boland, A., Picard, M, H., Hutter, A, M. & Wood, M, J. (2007). 'Training-specific changes in cardiac structure and function: a prospective and longitudinal assessment of competitive athletes', *Journal of Applied Physiology*, 104, pp.1121-1128.

Barlow, C, E., DeFina, L, F., Radford, N, B., Berry, J, D., Cooper, K, H., Haskell, W, L., Jones, L, W. & Lakoski, S, G. (2012). 'Cardiorespiratory fitness and long-term survival in "low-risk" adults', *Journal of the American Heart Association*, 1(4), pp. 1-7

Bartlett, J, D., Close, G, L., MacLaren, D, P., Gregson, W., Drust, B. & Morton, J, P. (2011). 'High-intensity interval running is perceived to be more enjoyable than moderate-intensity continuous exercise: implications for exercise adherence'. *Journal of sports sciences*, 29(6), pp.547-553.

Battersby, C., Hartley, K., Fletcher, A, F., Markowe, H, J., Styles, W., Sapper, H. & Bulpitt, C, J. (1995). 'Quality of life in treated hypertension: a case-control community based study', *Journal of Human Hypertension*, 9(12), pp. 981-986.

Besnier, F., Labrunée, M., Pathak, A., Pavy-Le Traon, A., Galès, C., Sénard, J. M. & Guiraud, T. (2017). 'Exercise training-induced modification in autonomic nervous system: An update for cardiac patients'. *Annals of Physical and Rehabilitation Medicine*, 60(1), pp.27-35.

Bhatnagar, P., Wickramasinghe, K., Williams, J., Rayner, M. & Townsend, N. (2015). 'The epidemiology of cardiovascular disease in the UK 2014', *Heart*, 101(15), pp. 1182-1189.  
Biering-Sørensen, T., Mogelvang, R. & Jensen, J, S. (2015). 'Prognostic value of cardiac time intervals measured by tissue Doppler imaging M-mode in the general population'. *Heart*, 101(12), pp.954-960.

Biering-Sørensen, T., Mogelvang, R., Schnohr, P. & Jensen, J, S. (2016). 'Cardiac Time Intervals Measured by Tissue Doppler Imaging M-mode: Association with Hypertension, Left Ventricular Geometry, and Future Ischemic Cardiovascular Diseases'. *Journal of the American Heart Association*, 5(1), pp.1-19

Blüher, S., Käpplinger, J., Herget, S., Reichardt, S., Böttcher, Y., Grimm, A., Kratzsch, J. & Petroff, D. (2017). 'Cardiometabolic risk markers, adipocyte fatty acid binding protein (aFABP) and the impact of high-intensity interval training (HIIT) in obese adolescents'. *Metabolism*, 68, pp.77-87.

Bogousslavsky, J., Castillo, V., Kumral, E., Henriques, I. & Van Melle, G. (1996). 'Stroke subtypes and hypertension: primary hemorrhage vs infarction, large-vs small-artery disease', *Archives of Neurology*, 53(3), pp. 265-269.

Borresen, J. & Lambert, M, I. (2008). 'Autonomic control of heart rate during and after exercise'. *Sports Medicine*, 38(8), pp.633-646.

Breslow, R, A., Ballard-Barbash, R., Munoz, K. & Graubard, B, I. (2001). 'Long-term recreational physical activity and breast cancer in the National Health and Nutrition Examination Survey I epidemiologic follow-up study', *Cancer Epidemiology and Prevention Biomarkers*, 10(7), pp.805-808.

Buckberg, G., Hoffman, J, I., Mahajan, A., Saleh, S. & Coghlan, C. (2008). 'Cardiac mechanics revisited'. *Circulation*, 118(24), pp.2571-2587.

Burke, S, M., Carron, A, V., Eys, M, A., Ntoumanis, N. & Estabrooks, P, A. (2006). Group versus individual approach? A meta-analysis of the effectiveness of interventions to promote physical activity, *Sport and Exercise Psychology Review*, 2(1), pp. 19-35.

Cassidy, S., Thoma, C., Hallsworth, K., Parikh, J., Hollingsworth, K.G., Taylor, R., Jakovljevic, D.G. and Trenell, M.I., (2016). 'High intensity intermittent exercise improves cardiac structure and function and reduces liver fat in patients with type 2 diabetes: a randomised controlled trial'. *Diabetologia*, 59(1), pp.56-66.

Chobanian, A, V., Bakris, G, L., Black, H, R., Cushman, W, C., Green, L, A., Izzo Jr, J, L., Jones, D, W., Materson, B, J., Oparil, S., Wright Jr, J, T. & Roccella, E, J. (2003). 'The seventh report of the joint national committee on prevention, detection, evaluation, and treatment of high blood pressure: the JNC 7 report', *Journal of the American Medical Association*, 289(19), pp. 2560-2571.

- Chow, C, K., Teo, K, K., Rangarajan, S., Islam, S., Gupta, R., Avezum, A., Bahonar, A., Chifamba, J., Dagenais, G., Diaz, R. & Kazmi, K. (2013). 'Prevalence, awareness, treatment, and control of hypertension in rural and urban communities in high-, middle-, and low-income countries', *Journal of the American Medical Association*, 310(9), pp. 959-968.
- Cornelissen, V, A. & Fagard, R, H. (2005) 'Effects of endurance training on blood pressure, blood pressure-regulating mechanisms, and cardiovascular risk factors', *Hypertension*, 46, pp. 667–675.
- Cote, A, T., Bredin, S, S., Phillips, A, A., Koehle, M, S., Glier, M, B., Devlin, A, M. & Warburton, D, E. (2013). 'Left ventricular mechanics and arterial-ventricular coupling following high-intensity interval exercise'. *Journal of Applied Physiology*, pp. 1705-1713.
- Cox, J, L., Boineau, J, P., Schuessler, R, B., Jaquiss, R, D. & Lappas, D, G. (1995). 'Modification of the maze procedure for atrial flutter and atrial fibrillation: I. Rationale and surgical results'. *The Journal of Thoracic and Cardiovascular Surgery*, 110(2), pp.473-484.
- De Backer, G., Ambrosionie, E., Borch-Johnsen, K., Brotons, C., Cifkova, R., Dallongeville, J., Ebrahim, S., Faergeman, O., Graham, I., Mancia, G. & Cats, V, M. (2003). 'European guidelines on cardiovascular disease prevention in clinical practice: third joint task force of European and other societies on cardiovascular disease prevention in clinical practice (constituted by representatives of eight societies and by invited experts)', *European Journal of Cardiovascular Prevention & Rehabilitation*, 10(1), pp. 1-78.
- Devereux, R, B., Alonso, D, R., Lutas, E, M., Gottlieb, G, J., Campo, E., Sachs, I. & Reichek, N. (1986). 'Echocardiographic assessment of left ventricular hypertrophy: comparison to necropsy findings'. *The American journal of cardiology*, 57(6), pp.450-458.
- Di Bello, V., Talini, E., Dell'Omo, G., Giannini, C., Delle Donne, M, G., Canale, M, L., Nardi, C., Palagi, C., Dini, F, L., Penno, G. & Del Prato, S. (2010). 'Early left ventricular mechanics abnormalities in prehypertension: a two-dimensional strain echocardiography study'. *American Journal of Hypertension*, 23(4), pp.405-412.
- Driller, M, W., Argus, C, K. & Shing, C, M. (2013). 'The reliability of a 30-s sprint test on the Wattbike cycle ergometer'. *International Journal of Sports Physiology Performance*, 8(4), pp. 379-383.
- Drukteinis, J, S., Roman, M, J., Fabsitz, R, R., Lee, E, T., Best, L, G., Russell, M. & Devereux, R, B. (2007). 'Cardiac and systemic hemodynamic characteristics of hypertension and prehypertension in adolescents and young adults'. *Circulation*, 115(2), pp.221-227.
- D'Souza, A., Bucchi, A., Johnsen, A, B., Logantha, S, J, R., Monfredi, O., Yanni, J., Prehar, S., Hart, G., Cartwright, E., Wisloff, U. & Dobryznski, H. (2014). 'Exercise training reduces resting heart rate via downregulation of the funny channel HCN4'. *Nature Communications*, 5, pp.3775.
- Dunn, F, G. (1983). 'Hypertension and myocardial infarction', *Journal of the American College of Cardiology*, 1, pp. 528-32.
- Durstine, J, L., Painter, P., Franklin, B, A., Morgan, D., Pitetti, K, H. & Roberts, S, O. (2000). 'Physical activity for the chronically ill and disabled', *Sports Medicine*, 30(3), pp.207-219.

- Ebrahim, S. & Smith, G. D. (1998). 'Lowering blood pressure: a systematic review of sustained effects of non-pharmacological interventions', *Journal of Public Health*, 20(4), pp.441-448.
- Edelmann, F., Gelbrich, G., Düngen, H. D., Fröhling, S., Wachter, R., Stahrenberg, R., Binder, L., Töpper, A., Lashki, D. J., Schwarz, S. & Herrmann-Lingen, C. (2011). 'Exercise training improves exercise capacity and diastolic function in patients with heart failure with preserved ejection fraction: results of the Ex-DHF (Exercise training in Diastolic Heart Failure) pilot study'. *Journal of the American College of Cardiology*, 58(17), pp.1780-1791.
- Fagard, R. H. (2006). 'Exercise is good for your blood pressure: Effects of endurance training and resistance training', *Clinical and Experimental Pharmacology and Physiology*, 33, pp. 853-856.
- Fagard, R., Aubert, A., Lysens, R., Staessen, J., Vanhees, L. & Amery, A. (1983). 'Noninvasive assessment of seasonal variations in cardiac structure and function in cyclists', *Circulation*, 67(4), pp.896-901.
- Falk, E. (2006). 'Pathogenesis of atherosclerosis', *Journal of the American College of Cardiology*, 47(8s1), pp. 7-12.
- Federmann, M. & Hess, O. M. (1994). 'Differentiation between systolic and diastolic dysfunction'. *European Heart Journal*, 15, pp.2-6.
- Fletcher, G. F., Ades, P. A., Kligfield, P., Arena, R., Balady, G. J., Bittner, V. A., Coke, L. A., Fleg, J. L., Forman, D. E., Gerber, T. C. & Gulati, M. (2013). 'Exercise standards for testing and training a scientific statement from the American Heart Association', *Circulation*, 128(8), pp. 873-934.
- Fletcher, G. F., Balady, G., Blair, S. N., Blumenthal, J., Caspersen, C., Chaitman, B., Epstein, S., Froelicher, E. S., Froelicher, V. F., Pina, I. L. & Pollock, M. L. (1996). 'Statement on exercise: Benefits and recommendations for physical activity programs for all Americans a statement for health professionals by the committee on exercise and cardiac rehabilitation of the council on clinical cardiology, American heart association', *Circulation*, 94(4), pp.857-862.
- Fletcher, G. F., Froelicher, V. F., Hartley, L. H., Haskell, W. L. & Pollock, M. L. (1990). 'Exercise standards. A statement for health professionals from the American Heart Association'. *Circulation*, 82(6), pp.2286-2322.
- Forjaz, C.L., Tinucci, T., Ortega, K.C., Santaella, D.F., Mion Jr, D. & Negrão, C.E. (2000). 'Factors affecting post-exercise hypotension in normotensive and hypertensive humans'. *Blood Pressure Monitoring*, 5(5-6), pp.255-262.
- Fortin, J., Haitchi, G., Bojic, A., Habenbacher, W., Grullenberger, R., Heller, A., Pacher, R., Wach, P. & Skrabal, F. (2001). 'Validation and verification of the Task Force Monitor'. *Results of Clinical Studies for FDA*, 510, pp. 1-7.
- Fortin, J., Marte, W., Grullenberger, R., Hacker, A., Habenbacher, W., Heller, A., Wagner, C., H., Wach, P. & Skrabal, F. (2006). 'Continuous non-invasive blood pressure monitoring

using concentrically interlocking control loops’, *Computers in Biology and Medicine*, 36(9), pp. 941-957.

Fox, K., Ford, I., Steg, P.G., Tendera, M., Ferrari, R. & Beautiful Investigators. (2008). ‘Ivabradine for patients with stable coronary artery disease and left-ventricular systolic dysfunction (BEAUTIFUL): a randomised, double-blind, placebo-controlled trial’, *The Lancet*, 372(9641), pp.807-816.

Gazmararian, J, A., Williams, M, V., Peel, J. & Baker, D, W. (2003). ‘Health literacy and knowledge of chronic disease’, *Patient Education and Counselling*, 51(3), pp. 267-275.

Gibala, M, J., Little, J, P., Macdonald, M, J. & Hawley, J, A. (2012). ‘Physiological adaptations to low-volume, high-intensity interval training in health and disease’. *Journal of Physiology*, 590, pp.1077–1084.

Gillen, J.B., & Gibala, M.J. (2013). ‘Is high-intensity interval training a time-efficient exercise strategy to improve health and fitness?’. *Applied Physiology, Nutrition, and Metabolism*, 39(3), pp. 409-412.

Goldstein, D, S., Benthó, O., Park, M, Y. & Sharabi, Y. (2011). ‘Low-frequency power of heart rate variability is not a measure of cardiac sympathetic tone but may be a measure of modulation of cardiac autonomic outflows by baroreflexes’. *Experimental Physiology*, 96(12), pp.1255-1261.

Gradman, A, H. & Alfayoumi, F. (2006). ‘From left ventricular hypertrophy to congestive heart failure: management of hypertensive heart disease’. *Progress in cardiovascular diseases*, 48(5), pp.326-341.

Green, D, J. (2009). ‘Exercise training as vascular medicine: direct impacts on the vasculature in humans’. *Exercise and Sport Sciences Reviews*, 37(4), pp. 196-202.

Green, D, J., Spence, A., Halliwill, J, R., Cable, N, T. & Thijssen, D, H, J. (2011). ‘Exercise and vascular adaptation in asymptomatic humans’, *Experimental physiology*, 96, pp. 57–70.

Greenland, P., Smith Jr, S, C. & Grundy, S, M. (2001). ‘Improving Coronary Heart Disease Risk Assessment in Asymptomatic People Role of Traditional Risk Factors and Noninvasive Cardiovascular Tests’, *Circulation*, 104(15), pp. 1863-1867.

Guo, X., Zhang, X., Guo, L., Li, Z., Zheng, L., Yu, S., Yang, H., Zhou, X., Zhang, X., Sun, Z. & Li, J. (2013). ‘Association between pre-hypertension and cardiovascular outcomes: a systematic review and meta-analysis of prospective studies’, *Current Hypertension Reports*, 15(6), pp.703-716.

Ha, J, W., Oh, J, K., Redfield, M, M., Ujino, K., Seward, J, B. & Tajik, A, J. (2004). ‘Triphasic mitral inflow velocity with middiastolic filling: clinical implications and associated echocardiographic findings’. *Journal of the American Society of Echocardiography*, 17(5), pp.428-431.

Hallal, P, C., Andersen, L, B., Bull, F, C., Guthold, R., Haskell, W., Ekelund, U. & Lancet Physical Activity Series Working Group. (2012). ‘Global physical activity levels: surveillance progress, pitfalls, and prospects’. *The lancet*, 380(9838), pp. 247-257.

- Hambrecht, R., Adams, V., Erbs, S., Linke, A., Kränkel, N., Shu, Y., Baither, Y., Gielen, S., Thiele, H., Gummert, J. F. & Mohr, F. W. (2003). 'Regular physical activity improves endothelial function in patients with coronary artery disease by increasing phosphorylation of endothelial nitric oxide synthase'. *Circulation*, 107(25), pp. 3152-3158.
- Hambrecht, R., Fiehn, E., Weigl, C., Gielen, S., Hamann, C., Kaiser, R. & Schuler, G. (1998). 'Regular physical exercise corrects endothelial dysfunction and improves exercise capacity in patients with chronic heart failure'. *Circulation*, 98(24). Pp. 2709-2715.
- Haskell, W. L., Lee, I. M., Pate, R. R., Powell, K. E., Blair, S. N., Franklin, B. A., Macera, C. A., Heath, G. W., Thompson, P. D. & Bauman, A. (2007). 'Physical activity and public health: updated recommendation for adults from the American College of Sports Medicine and the American Heart Association'. *Circulation*, 116(9), pp. 1081-1093.
- Haskell, W.L., Sims, C., Myll, J., Bortz, W.M., St Goar, F.G., & Alderman, E.L. (1993). 'Coronary artery size and dilating capacity in ultra-distance runners'. *Circulation*, 87(4), pp. 1076-1082.
- Hautala, A. J., Kiviniemi, A. M., & Tulppo, M. P. (2009). 'Individual responses to aerobic exercise: the role of the autonomic nervous system'. *Neuroscience & Biobehavioral Reviews*, 33(2), pp. 107-115.
- He, J. & Whelton, P. K. (1997). 'Epidemiology and prevention of hypertension', *Medical Clinics of North America*, 81(5), pp. 1077-1097.
- Helgerud, J., Hoydal, K., Wang, E., Karlsen, T., Berg, P., Bjerkaas, M., Simonsen, T., Helgesen, C., Hjørth, N., Bach, R. & Hoff, J. (2007). 'Aerobic high-intensity intervals improve VO<sub>2max</sub> more than moderate training'. *Medicine and Science in Sports and Exercise*, 39(4), pp. 665- 671.
- Hess, O. M. (1993). 'Hemodynamics in heart failure: systolic and diastolic dysfunction'. *Therapeutische Umschau Revue Therapeutique*, 50(6), pp.414-418.
- Heydari, M., Boutcher, Y. N. & Boutcher, S. H. (2013). 'High-intensity intermittent exercise and cardiovascular and autonomic function'. *Clinical Autonomic Research*, 23(1), pp. 57-65.
- Hillis, G. S., Møller, J. E., Pellikka, P. A., Gersh, B. J., Wright, R. S., Ommen, S. R., Reeder, G. S. & Oh, J. K. (2004). 'Noninvasive estimation of left ventricular filling pressure by E/e' is a powerful predictor of survival after acute myocardial infarction'. *Journal of the American College of Cardiology*, 43(3), pp.360-367.
- Hinderliter, A., Sherwood, A., Gullette, E. C., Babyak, M., Waugh, R., Georgiades, A. & Blumenthal, J. A. (2002). 'Reduction of left ventricular hypertrophy after exercise and weight loss in overweight patients with mild hypertension'. *Archives of Internal Medicine*, 162(12), pp.1333-1339.
- Hopker, J., Myers, S., Jobson, S. A., Bruce, W. & Passfield, L. (2010). 'Validity and reliability of the Wattbike cycle ergometer'. *International Journal of Sports Medicine*, 31(10), pp. 731-736.

- Huang, Y., Cai, X., Liu, C., Zhu, D., Hua, J., Hu, Y., Peng, J. & Xu, D. (2015). 'Prehypertension and the Risk of Coronary Heart Disease in Asian and Western Populations: A Meta-analysis', *Journal of the American Heart Association*, 4(2), pp.1-12.
- Huang, Y., Wang, S., Cai, X., Mai, W., Hu, Y., Tang, H. & Xu, D. (2013). 'Prehypertension and incidence of cardiovascular disease: a meta-analysis', *BMC medicine*, 11(1), p.177-186.
- Hubert, H. B., Feinleib, M., McNamara, P. M. & Castelli, W. P. (1983). 'Obesity as an independent risk factor for cardiovascular disease: a 26-year follow-up of participants in the Framingham Heart Study', *Circulation*, 67(5), pp. 968-977.
- Huynh, J., Nishimura, N., Rana, K., Peloquin, J. M., Califano, J. P., Montague, C. R., King, M. R., Schaffer, C. B. & Reinhart-King, C. A. (2011). 'Age-related intimal stiffening enhances endothelial permeability and leukocyte transmigration', *Science Translational Medicine*, 3(112), pp. 112-122.
- Hwang, C. L., Yoo, J. K., Kim, H. K., Hwang, M. H., Handberg, E. M., Petersen, J. W. & Christou, D. D. (2016). 'Novel all-extremity high-intensity interval training improves aerobic fitness, cardiac function and insulin resistance in healthy older adults'. *Experimental gerontology*, 82, pp.112-119.
- Ix, J. H., Shlipak, M. G., Chertow, G. M., Ali, S., Schiller, N. B. & Whooley, M. A. (2006). 'Cystatin C, left ventricular hypertrophy, and diastolic dysfunction: data from the Heart and Soul Study'. *Journal of Cardiac Failure*, 12(8), pp.601-607.
- Kapila, R. & Mahajan, R. P. (2009). 'Diastolic dysfunction'. *Continuing Education in Anaesthesia, Critical Care & Pain*, 9(1), pp.29-33.
- Kannel, W. B. (2009). 'Hypertension: reflections on risks and prognostication', *Medical Clinics of North America*, 93(3), pp. 541-558.
- Kemi, O. J., Ceci, M., Condorelli, G., Smith, G. L. & Wisloff, U. (2008). 'Myocardial sarcoplasmic reticulum Ca<sup>2+</sup> ATPase function is increased by aerobic interval training'. *European Journal of Cardiovascular Prevention & Rehabilitation*, 15(2), pp. 145-148.
- Kemi, O. J., Haram, P. M., Loennechen, J. P., Osnes, J. B., Skomedal, T., Wisløff, U. & Ellingsen, Ø. (2005). 'Moderate vs. high exercise intensity: differential effects on aerobic fitness, cardiomyocyte contractility, and endothelial function'. *Cardiovascular Research*, 67(1), pp. 161-172.
- Keren, G., Sonnenblick, E. H. & LeJemtel, T. H. (1988). 'Mitral annulus motion. Relation to pulmonary venous and transmitral flows in normal subjects and in patients with dilated cardiomyopathy'. *Circulation*, 78(3), pp.621-629.
- Keteyian, S. J., Brawner, C. A., Savage, P. D., Ehrman, J. K., Schairer, J., Divine, G., Aldred, H., Ophaug, K. & Ades, P. A. (2008). 'Peak aerobic capacity predicts prognosis in patients with coronary heart disease'. *American Heart Journal*, 156(2), pp. 292-300.
- King, A. C., Blair, S. N., Bild, D. E., Dishman, R. K., Dubbert, P. M., Marcus, B. H., Oldridge, N. B., Paffenbarger, R. S., Powell, K. E. & Yeager, K. K. (1992). 'Determinants of



physical activity and interventions in adults', *Medicine & Science in Sports & Exercise*, 24(6), pp. 221-236.

Knowler, W, C., Barrett-Connor, E., Fowler, S, E., Richard, F., Hamman, R, F., Lachin, J, M., Walker, E, A. & Nathan, D, M. (2002). 'For the Diabetes Prevention Program Research Group the Diabetes Prevention Program Research Group: Reduction in the incidence of Type 2 diabetes with lifestyle intervention or metformin', *The New England Journal of Medicine*, 346, pp.393-403.

Kobirumaki-Shimozawa, F., Inoue, T., Shintani, S, A., Oyama, K., Terui, T., Minamisawa, S., Ishiwata, S, I. & Fukuda, N. (2014). 'Cardiac thin filament regulation and the Frank–Starling mechanism'. *The Journal of Physiological Sciences*, 64(4), pp. 221-232.

Kokkinos, P, F., Narayan, P., Colleran, J, A., Pittaras, A., Notargiacomo, A., Reda, D. & Papademetriou, V. (1995). 'Effects of regular exercise on blood pressure and left ventricular hypertrophy in African-American men with severe hypertension'. *New England Journal of Medicine*, 333(22), pp.1462-1467.

Kono, T., Sabbah, H, N., Rosman, H., Alam, M., Jafri, S. & Goldstein, S. (1992). 'Left ventricular shape is the primary determinant of functional mitral regurgitation in heart failure'. *Journal of the American College of Cardiology*, 20(7), pp.1594-1598.

Krum, H., Schlaich, M, P., Sobotka, P, A., Böhm, M., Mahfoud, F., Rocha-Singh, K., Katholi, R. & Esler, M, D. (2014). 'Percutaneous renal denervation in patients with treatment-resistant hypertension: final 3-year report of the Symplicity HTN-1 study', *The Lancet*, 383(9917), pp. 622-629.

Kshirsagar, A, V., Carpenter, M., Bang, H., Wyatt, S, B. & Colindres, R, E. (2006). 'Blood pressure usually considered normal is associated with an elevated risk of cardiovascular disease', *The American Journal of Medicine*, 119(2), pp.133-141.

Lai, H, L., Liao, K, W., Huang, C, Y., Chen, P, W. & Peng, T, C. (2013). 'Effects of music on immunity and physiological responses in healthcare workers: a randomized controlled trial'. *Stress and Health*, 29(2), pp.91-98.

Laine, H., Katoh, C., Luotolahti, M., Yki-Järvinen, H., Kantola, I., Jula, A., Takala, T, O., Ruotsalainen, U., Iida, H., Haaparanta, M. & Nuutila, P. (1999). 'Myocardial oxygen consumption is unchanged but efficiency is reduced in patients with essential hypertension and left ventricular hypertrophy', *Circulation*, 100(24), pp. 2425-2430.

Lanfranchi, P, A. & Somers, V, K. (2002). 'Arterial baroreflex function and cardiovascular variability: interactions and implications'. *American Journal of Physiology-Regulatory, Integrative and Comparative Physiology*, 283(4), pp. 815-826.

Lang, R, M., Badano, L, P., Mor-Avi, V., Afilalo, J., Armstrong, A., Ernande, L., Flachskampf, F, A., Foster, E., Goldstein, S, A., Kuznetsova, T. & Lancellotti, P. (2015). 'Recommendations for cardiac chamber quantification by echocardiography in adults: an update from the American Society of Echocardiography and the European Association of Cardiovascular Imaging'. *European Heart Journal-Cardiovascular Imaging*, 16(3), pp.233-271.

- Lang, R. M., Bierig, M., Devereux, R. B., Flachskampf, F. A., Foster, E., Pellikka, P. A., Picard, M. H., Roman, M. J., Seward, J., Shanewise, J. & Solomon, S. (2006). 'Recommendations for chamber quantification'. *European Journal of Echocardiography*, 7(2), pp.79-108.
- Lalande, S. & Johnson, B. D. (2008). 'Diastolic dysfunction: a link between hypertension and heart failure'. *Drugs of today*, 44(7), pp.503-513.
- Lavie, C. J., Arena, R., Swift, D. L., Johannsen, N. M., Sui, X., Lee, D. C., Earnest, C. P., Church, T. S., O'Keefe, J. H., Milani, R. V. & Blair, S. N. (2015). 'Exercise and the cardiovascular system'. *Circulation research*, 117(2), pp.207-219.
- Lee, S. H., Kwon, S. J., Kim, K. S., Yoon, B. W. & Roh, J. K. (2004). 'Cerebral microbleeds in patients with hypertensive stroke', *Journal of Neurology*, 251(10), pp. 1183-1189.
- Lee, I. M., Shiroma, E. J., Lobelo, F., Puska, P., Blair, S. N., Katzmarzyk, P. T. & Lancet Physical Activity Series Working Group. (2012). 'Effect of physical inactivity on major non-communicable diseases worldwide: an analysis of burden of disease and life expectancy'. *The Lancet*, 380(9838), pp. 219-229.
- Lee, I. M. & Skerrett, P. J. (2001). 'Physical activity and all-cause mortality: what is the dose-response relation?'. *Medicine and Science in Sports and Exercise*, 33(6), pp. 459-471.
- Leitschuh, M., Cupples, L. A., Kannel, W., Gagnon, D. & Chobanian, A. (1991). 'High-normal blood pressure progression to hypertension in the Framingham Heart Study', *Hypertension*, 17(1), pp.22-27.
- Levick, J. R. (2010). *An introduction to cardiovascular physiology*. (5<sup>th</sup> ed). London: Butterworth-Heinemann.
- Levy, D., Larson, M. G., Vasan, R. S., Kannel, W. B. & Ho, K. K. (1996). 'The progression from hypertension to congestive heart failure'. *Journal of the American Medical Association*, 275(20), pp. 1557-1562.
- Lewington, S., Clarke, R., Qizilbash, N., Peto, R. & Collins, R. (2002). 'Prospective Studies Collaboration: Age-specific relevance of usual blood pressure to vascular mortality: a meta-analysis of individual data for one million adults in 61 prospective studies', *The Lancet*, 360(9349), pp.1903-1913.
- MacInnis, M. J. & Gibala, M. J. (2017). 'Physiological adaptations to interval training and the role of exercise intensity', *The Journal of Physiology*, 595(9), pp.2915-2930.
- Mandinov, L., Eberli, F. R., Seiler, C. & Hess, O. M. (2000). Diastolic heart failure. *Cardiovascular research*, 45(4), pp.813-825.
- Martin, C. K., Church, T. S., Thompson, A. M., Earnest, C. P. & Blair, S. N. (2009). 'Exercise dose and quality of life: a randomized controlled trial', *Archives of Internal Medicine*, 169(3), pp. 269-278.

- McArdle, W. D., Katch, F. I. & Katch, V. L. (2010). *Exercise physiology: nutrition, energy, and human performance*. (7<sup>th</sup> edition). Baltimore, MD: Lippincott Williams & Wilkins.
- McCorry, L. K. (2007). 'Physiology of the autonomic nervous system', *American Journal of Pharmaceutical Education*, 71(4), pp. 78-89.
- McDonagh, T. A., Robb, S. D., Murdoch, D. R., Morton, J. J., Ford, I., Morrison, C. E., Tunstall-Pedoe, H., McMurray, J. J. V. & Dargie, H. J. (1998). 'Biochemical detection of left-ventricular systolic dysfunction', *The Lancet*, 351(9095), pp.9-13.
- Meneton, P., Jeunemaitre, X., de Wardener, H. E. & Macgregor, G. A. (2005). 'Links between dietary salt intake, renal salt handling, blood pressure, and cardiovascular diseases', *Physiological Reviews*, 85(2), pp.679-715.
- Messerli, F. H. & Aepfelbacher, F. C. (1995). 'Hypertension and left-ventricular hypertrophy', *Cardiology Clinics*, 13(4), pp. 549-557.
- Mills, K. T., Xu, Y., Zhang, W., Bundy, J. D., Chen, C. S., Kelly, T. N., Chen, J. & He, J. (2015). 'A systematic analysis of worldwide population-based data on the global burden of chronic kidney disease in 2010', *Kidney International*, 88(5), pp. 950-957.
- Molmen-Hansen, H. E., Stolen, T., Tjonna, A. E., Aamot, I. L., Ekeberg, I. S., Tyldum, G. A., Wisloff, U., Ingul, C. B. & Stoylen, A. (2012). 'Aerobic interval training reduces blood pressure and improves myocardial function in hypertensive patients'. *European Journal of Preventive Cardiology*, 19(2), pp.151-160.
- Mosca, L., Appel, L. J., Benjamin, E. J., Berra, K., Chandra-Strobos, N., Fabunmi, R. P., Grady, D., Haan, C. K., Hayes, S. N., Judelson, D. R., Keenan, N. L., McBride, P., Oparil, S., Ouyang, P., Oz, M. C., Mendelsohn, M. E., Pasternak, R. C., Pinn, V. W., Robertson, R. M., Schenck-Gustafsson, K., Sila, C. A., Smith Jr, S. C., Sopko, G., Taylor, A. L., Walsh, B. W., Wenger, N. K. & Williams, C. L. (2004). 'Evidence-based guidelines for cardiovascular disease prevention in women', *Circulation*, 109, pp. 672-693.
- Nabel, E. G., & Braunwald, E. (2012). 'A tale of coronary artery disease and myocardial infarction'. *New England Journal of Medicine*, 366(1), pp. 54-63.
- Nagueh, S. F., Appleton, C. P., Gillebert, T. C., Marino, P. N., Oh, J. K., Smiseth, O. A., Waggoner, A. D., Flachskampf, F. A., Pellikka, P. A. & Evangelista, A. (2009). 'Recommendations for the evaluation of left ventricular diastolic function by echocardiography'. *Journal of the American Society of Echocardiography*, 22(2), pp.107-133.
- Nishimura, R. A. & Tajik, A. J. (1997). 'Evaluation of diastolic filling of left ventricle in health and disease: Doppler echocardiography is the clinician's Rosetta Stone'. *Journal of the American College of Cardiology*, 30(1), pp.8-18.
- Okwuosa, I. S., Lewsey, S. C., Adesiyun, T., Blumenthal, R. S. & Yancy, C. W. (2016). 'Worldwide disparities in cardiovascular disease: Challenges and solutions', *International Journal of Cardiology*, 202, pp. 433-440.

- Ommen, S. R., Nishimura, R. A., Appleton, C. P., Miller, F. A., Oh, J. K., Redfield, M. M. & Tajik, A. J. (2000). 'Clinical utility of Doppler echocardiography and tissue Doppler imaging in the estimation of left ventricular filling pressures'. *Circulation*, 102(15), pp.1788-1794.
- Oparil, S., Bishop, S. P. & Clubb, F. J. (1984). 'Myocardial cell hypertrophy or hyperplasia', *Hypertension*, 6(6), pp. 3-38.
- Paulus, W. J., Tschöpe, C., Sanderson, J. E., Rusconi, C., Flachskampf, F. A., Rademakers, F. E., Marino, P., Smiseth, O. A., De Keulenaer, G., Leite-Moreira, A. F. & Borbély, A. (2007). 'How to diagnose diastolic heart failure: a consensus statement on the diagnosis of heart failure with normal left ventricular ejection fraction by the Heart Failure and Echocardiography Associations of the European Society of Cardiology'. *European heart journal*, 28(20), pp.2539-2550.
- Pearson, T. A., Mensah, G. A., Alexander, R. W., Anderson, J. L., Cannon, R. O., Criqui, M., Fadl, Y. Y., Fortmann, S. P., Hong, Y., Myers, G. L. & Rifai, N. (2003). 'Markers of inflammation and cardiovascular disease'. *Circulation*, 107(3), pp.499-511.
- Pocock, G. & Richards, C.D. (2006). *Human Physiology the Basis of Medicine*, 3<sup>rd</sup> Ed, Oxford, Oxford University Press.
- Pollock, K. M. (2001). 'Exercise in treating depression: broadening the psychotherapist's role', *Journal of Clinical Psychology*, 57, pp.1289–1300.
- Powers, S. K. & Howley, E. T. (2001) *Exercise physiology: Theory and application to fitness and performance*, New York: McGraw-Hill.
- Puddey, I. B., Beilin, L. J. & Vandongen, R. (1987). 'Regular alcohol use raises blood pressure in treated hypertensive subjects: a randomised controlled trial', *The Lancet*, 329(8534), pp.647-651.
- Pyörälä, K., De Backer, G., Graham, I., Poole-Wilson, P. & Wood, D. (1994). 'Prevention of coronary heart disease in clinical practice', *European Heart Journal*, 15(10), pp.1300-1331.
- Qureshi, A. I., Tuhim, S., Broderick, J. P., Batjer, H. H., Hondo, H. & Hanley, D. F. (2001). 'Spontaneous intracerebral hemorrhage', *New England Journal of Medicine*, 344(19), pp. 1450-1460.
- Rakugi, H., Yu, H., Kamitani, A., Nakamura, Y., Ohishi, M., Kamide, K., Nakata, Y., Takami, S., Higaki, J. & Ogihara, T. (1996). 'Links between hypertension and myocardial infarction', *American Heart Journal*, 132(1), pp. 213-221.
- Ramos, J. S., Dalleck, L. C., Tjonna, A. E., Beetham, K. S. & Coombes, J. S. (2015). 'The impact of high-intensity interval training versus moderate-intensity continuous training on vascular function: a systematic review and meta-analysis'. *Sports Medicine*, 45(5), pp.679-692.
- Redfield, M. M., Jacobsen, S. J., Burnett Jr, J. C., Mahoney, D. W., Bailey, K. R. & Rodeheffer, R. J. (2003). 'Burden of systolic and diastolic ventricular dysfunction in the community: appreciating the scope of the heart failure epidemic'. *Journal of the American Medical Association*, 289(2), pp.194-202.
- Riemer, E. C. (2003). 'Inflammatory Atherosclerosis: Characteristics of the Injurious Agent'. *Archives of Pathology & Laboratory Medicine*, 127(11), pp. 1533-1534.

Robbins, J. D., Maniar, P. B., Cotts, W., Parker, M. A., Bonow, R. O. & Gheorghiade, M. (2003). 'Prevalence and severity of mitral regurgitation in chronic systolic heart failure'. *The American Journal of Cardiology*, 91(3), pp.360-362.

Ross, R. (1999). 'Atherosclerosis an inflammatory disease', *The New England Journal of Medicine*, 340, pp. 115–126.

Routledge, F. S., Campbell, T. S., McFetridge-Durdle, J. A. & Bacon, S. L. (2010). 'Improvements in heart rate variability with exercise therapy'. *Canadian Journal of Cardiology*, 26(6), pp.303-312.

Rustad, L.A., Nytrøen, K., Amundsen, B.H., Gullestad, L. and Aakhus, S., 2014. One year of high-intensity interval training improves exercise capacity, but not left ventricular function in stable heart transplant recipients: A randomised controlled trial. *European journal of preventive cardiology*, 21(2), pp.181-191.

Sacco, R. L., Benjamin, E. J., Broderick, J. P., Dyken, M., Easton, J. D., Feinberg, W. M., Goldstein, L. B., Gorelick, P. B., Howard, G., Kittner, S. J. & Manolio, T. A. (1997). 'Risk factors', *Stroke*, 28(7), pp.1507-1517.

Santos, A. B., Gupta, D. K., Bello, N. A., Gori, M., Claggett, B., Fuchs, F. D., Shah, A. M., Coresh, J., Sharrett, A. R., Cheng, S. & Solomon, S. D. (2016). 'Prehypertension is associated with abnormalities of cardiac structure and function in the atherosclerosis risk in communities study', *American Journal of Hypertension*, 29(5), pp.568-574.

Sarnak, M. J., Levey, A. S., Schoolwerth, A. C., Coresh, J., Culeton, B., Hamm, L. L., McCullough, P. A., Kasiske, B. L., Kelepouris, E., Klag, M. J. & Parfrey, P. (2003). 'Kidney disease as a risk factor for development of cardiovascular disease a statement from the American Heart Association Councils on kidney in cardiovascular disease, high blood pressure research, clinical cardiology, and epidemiology and prevention', *Circulation*, 108(17), pp. 2154-2169.

Sato, K., Grant, A. D., Negishi, K., Cremer, P. C., Negishi, T., Kumar, A., Collier, P., Kapadia, S. R., Grimm, R. A., Desai, M. Y. & Griffin, B. P. (2017). 'Reliability of updated left ventricular diastolic function recommendations in predicting elevated left ventricular filling pressure and prognosis'. *American Heart Journal*, 189, pp.28-39.

Schiller, N. B., Shah, P. M., Crawford, M., DeMaria, A., Devereux, R., Feigenbaum, H., Gutgesell, H., Reichek, N., Sahn, D., Schnittger, I. & Silverman, N. H. (1989). 'Recommendations for quantitation of the left ventricle by two-dimensional echocardiography'. *Journal of the American Society of Echocardiography*, 2(5), pp.358-367.

Schoenfeld, B. & Dawes, J. (2009). 'High-intensity interval training: Applications for general fitness training', *Strength & Conditioning Journal*, 31(6), pp. 44-46.

Schwartz, R. B., Jones, K. M., Kalina, P., Bajakian, R. L., Mantello, M. T., Garada, B. & Holman, B. L. (1992). 'Hypertensive encephalopathy: findings on CT, MR imaging, and SPECT imaging in 14 cases', *American Journal of Roentgenology*, 159(2), pp. 379-383.

- Sharman, J. E., La Gerche, A. & Coombes, J. S. (2015). 'Exercise and cardiovascular risk in patients with hypertension', *American Journal of Hypertension*, 28(2), pp. 147-158.
- Shephard, R. J., & Balady, G. J. (1999). 'Exercise as cardiovascular therapy'. *Circulation*, 99(7), pp. 963-972.
- Shirayev, T. & Barclay, G. (2012). 'Evidence based exercise: Clinical benefits of high intensity interval training', *Australian Family Physician*, 41(12), pp. 960-962.
- Siebig, S., Rockmann, F., Sabel, K., Zuber-Jerger, I., Dierkes, C., Brünnler, T. & Wrede, C, E. (2009). 'Continuous non-invasive arterial pressure technique improves patient monitoring during interventional endoscopy', *International Journal of Medical Sciences*, 6(1), pp. 37-42.
- Silverthorn, D. U. (2009). *Human Physiology: An Integrated Approach*, 4<sup>th</sup> Ed, San Francisco: Pearson Education Inc.
- Slattery, M. L. & Potter, J. D. (2002). 'Physical activity and colon cancer: confounding or interaction?', *Medicine & Science in Sports & Exercise*, 34, pp.913–919.
- Smith, S.C., Collins, A., Ferrari, R., Holmes, D.R., Logstrup, S., McGhie, D.V., Ralston, J., Sacco, R.L., Stam, H., Taubert, K., & Wood, D.A. (2012). 'Our time: a call to save preventable death from cardiovascular disease (heart disease and stroke)'. *European Heart Journal*, 60, pp. 2343-2348.
- Stamler, J., Stamler, R. & Neaton, J. D. (1993). 'Blood pressure, systolic and diastolic, and cardiovascular risks: US population data'. *Archives of Internal Medicine*, 153(5), pp. 598-615.
- Stouffer, G. A., Klein, L. J. & McLaughlin, D. P. (2017). *Cardiovascular Hemodynamics for the Clinician*, 2<sup>nd</sup> Edn, Oxford, John Wiley & Sons Ltd.
- Tan, Y. T., Wenzelburger, F., Lee, E., Heatlie, G., Leyva, F., Patel, K., Frenneaux, M. & Sanderson, J. E. (2009). 'The pathophysiology of heart failure with normal ejection fraction: exercise echocardiography reveals complex abnormalities of both systolic and diastolic ventricular function involving torsion, untwist, and longitudinal motion'. *Journal of the American College of Cardiology*, 54(1), pp.36-46.
- Thomas, J. D. & Weyman, A. E. (1991). 'Echocardiographic Doppler evaluation of left ventricular diastolic function. Physics and physiology'. *Circulation*, 84(3), pp.977-990.
- Thompson, L. (2015). *I've got my Blood pressure under control*, London; British Heart Foundation.
- Thompson, P. D. (2005). 'Exercise prescription and proscription for patients with coronary artery disease'. *Circulation*, 112(15), pp. 2354-2363.
- Thompson, P. D., Buchner, D., Piña, I. L., Balady, G. J., Williams, M. A., Marcus, B. H., Berra, K., Blair, S. N., Costa, F., Franklin, B. & Fletcher, G. F. (2003). 'Exercise and physical activity in the prevention and treatment of atherosclerotic cardiovascular disease', *Arteriosclerosis, Thrombosis, and Vascular Biology*, 23(8), pp.42-49.
- Tortora, G. J. & Derrickson, B. H. (2011). *Principles of anatomy and physiology: Volume 2, maintenance and continuity of the human body*. (13<sup>th</sup> ed). Hoboken, NJ: John Wiley & Sons.

- Townsend, N., Wickramasinghe, K., Williams, J., Bhatnagar, P. & Rayner, M. (2015). *Physical Activity Statistics 2015*. British Heart Foundation: London.
- Townsend, N., Williams, J., Bhatnagar, P., Wickramasinghe, K. & Rayner, M. (2014). *Cardiovascular disease statistics*, British Heart Foundation: London.
- Uppoor, R, B., Arora, A., Unnikrishnan, B. & Holla, R. (2015). ‘Modifiable risk factors for myocardial infarction among hypertensive patients visiting outpatient clinics of tertiary care hospitals in coastal South India’, *Asian Journal of Pharmaceutical and Clinical Research*, 8(6), pp. 204-206.
- Vacek, T, P., Rehman, S., Neamtu, D., Yu, S., Givimani, S. & Tyagi, S, C. (2015). ‘Matrix metalloproteinases in atherosclerosis: role of nitric oxide, hydrogen sulfide, homocysteine, and polymorphisms’. *Vascular Health and Risk Management*, 11, pp.173-183.
- Vasan, R, S., Larson, M, G., Benjamin, E, J., Evans, J, C., Reiss, C, K. & Levy, D. (1999). ‘Congestive heart failure in subjects with normal versus reduced left ventricular ejection fraction: prevalence and mortality in a population-based cohort’, *Journal of the American College of Cardiology*, 33(7), pp.1948-1955.
- Vogt, M., Motz, W, H., Schwartzkopf, B. & Strauer, B, E. (1993). ‘Pathophysiology and clinical aspects of hypertensive hypertrophy’, *European Heart Journal*, 14, pp. 2-7.
- Vuori, I, M. (2001). ‘Dose-response of physical activity and low back pain, osteoarthritis, and osteoporosis’, *Medicine & Science in Sports & Exercise*, 33(6), pp.551–586.
- Watanabe, N. & Ikeda, U. (2004). ‘Matrix metalloproteinases and atherosclerosis’. *Current Atherosclerosis Reports*, 6(2), pp.112-120.
- Weston, K, S., Wisløff, U. & Coombes, J, S. (2014). ‘High-intensity interval training in patients with lifestyle-induced cardiometabolic disease: a systematic review and meta-analysis’, *British Journal of Sports Medicine*, 48(16), pp. 1227-1234.
- Willmore, J, H., Costill, D, L. & Kenney, W, L. (2008). *Physiology of Sport and Exercise*, 4<sup>th</sup> Ed, Leeds: Human Kinetics.
- Wisløff, U., Støylen, A., Loennechen, J, P., Bruvold, M., Rognum, Ø., Haram, P, M., Tjønnå, A, E., Helgerud, J., Slørdahl, S, A., Lee, S, J. & Videm, V. (2007). ‘Superior cardiovascular effect of aerobic interval training versus moderate continuous training in heart failure patients’. *Circulation*, 115(24), pp.3086-3094.
- Wing, R, R. & Hill, J, O. (2001). ‘Successful weight loss maintenance’, *Annual Review of Nutrition*, 21, pp.323–341.
- Wong, T, Y. & Mitchell, P. (2004). ‘Hypertensive retinopathy’, *New England Journal of Medicine*, 351(22), pp. 2310-2317.
- Wu, A, H., Aaronson, K, D., Bolling, S, F., Pagani, F, D., Welch, K. & Koelling, T, M. (2005). ‘Impact of mitral valve annuloplasty on mortality risk in patients with mitral regurgitation and left ventricular systolic dysfunction’. *Journal of the American College of Cardiology*, 45(3), pp.381-387.

Zile, M, R. & Brutsaert, D, L. (2002). 'New concepts in diastolic dysfunction and diastolic heart failure: part II'. *Circulation*, 105(12), pp.1503-1508.



6.0: Appendix.

6.1: Appendix 3- Physical Activity Readiness Questionnaire (PARQ)

**Department of Sport Science, Tourism and Leisure**

**Sport Science Informed Consent & Health and Fitness Questionnaire**

Name: .....

Date of Birth: .....

Age: .....

Sex: .....

Please answer the following questions by *circling* the appropriate response and if necessary providing extra information in the spaces provided.

**ANY INFORMATION CONTAINED HEREIN WILL BE TREATED AS CONFIDENTIAL**

1. How would you describe your present level of fitness?

Untrained / Moderately trained / Trained / Highly trained

2. Average number of hours spent exercising .....per wk

3. How would you describe your present bodyweight?

Underweight / Ideal / Slightly overweight / Very overweight

4. How would you describe your smoking habits?

Non smoker / Previous smoker / Currently smoking

5. How would you describe your alcohol intake?

Never Drink / An occasional drink / A drink every day / More than one drink a day

(Note 1 drink = 1 unit)

6. Have you had to consult your doctor within the last six months?

**Yes**

**/ No**

If you have answered **yes**, please give

details:.....

**7.** Are you presently taking any form of medication? **Yes**

**/ No**

If you have answered **yes**, please give details:

.....

**8.** Do you suffer or have you ever suffered from any of the following?

a. Diabetes **Yes / No**      b. Asthma **Yes**

**/ No**

c. Epilepsy **Yes / No**      d. Bronchitis **Yes**

**/ No**

e. Any form of heart complaint **Yes / No**      f. Serious Back or Neck Injury **Yes**

**/ No**

g. High blood pressure **Yes / No**      h. Aneurysm <sup>1</sup> or Embolism<sup>2</sup> **Yes / No**

1: Arterial wall weakness causing dilation.

2: Obstruction in the Artery.

**9.** Is there a history of heart complaint in your family?

**Yes / No**

If you have answered **yes**, please give details:

.....

**10.** Do you have any allergies?

**Yes / No**

If you have answered **yes**, please give details:

.....

**11.** Do you currently have any form of muscle or joint injury?

**Yes / No**

If you have answered **yes**, please give details:

.....

**12.** Have you had to suspend your normal training/physical activity in the last two weeks?

**Yes / No**

If you have answered **yes**, please give details:

.....

6.2: Informed Consent

The full details of the tests have been explained to me. I am clear about what will be involved and I am aware of the purpose of the tests.

I know that I am not obliged to complete the tests. I am free to stop the test at any point and for any reason.

The test results are confidential and will only be communicated to others such as my coach if agreed in advance.

As far as I am aware, there is nothing that might prevent me from successfully completing the tests that have been outlined to me.

**Signature of Participant:** .....

**Signature of Sport Scientist:** .....

**Date:** .....